

27ft Sectional Homes





Designed For Living, Crafted For Life



Full list of features and specifications is noted on the last page

Interior Features

- Decorative wall panels
- Cordless cellular blinds
- Laminate countertops
- Crown moulding on kitchen cabinets
- LED lighting throughout
- Soft-close hinges on cabinet doors
- Single-row subway tile backsplash
- 1-Piece tub/shower combination
- Deluxe range with power range hood

Looks Lakatre
Laminate Countertop

Pale Faces-Carpet

Stardust Pearl
Wall Panels

G969M Houston-Lino

Diva-Cabinets

Exterior Features

- 2.25/12 roof pitch
- Maintenance free vinyl siding
- Low slope shingle application
- Lifetime Warranty* shingles
- Colored metal soffit & fascia
- Exterior house wrap
- Craftsmen accent boards around standard windows on front & curbside of home
- Triple M rigid exterior wall system
- Carriage lights and GFI receptacles at doors

Grey Blend-Stacked Stone

Meadowlark-Paint

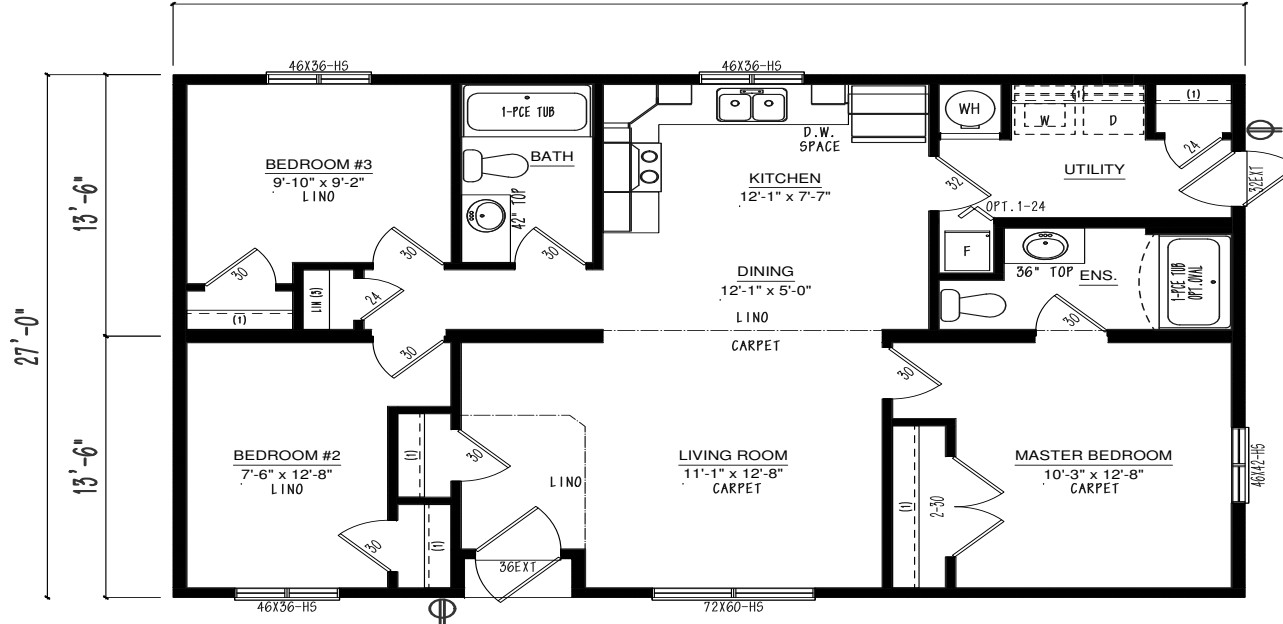
Brownwood-Shingles

Harvard Slate-Siding

BC2740-100-C



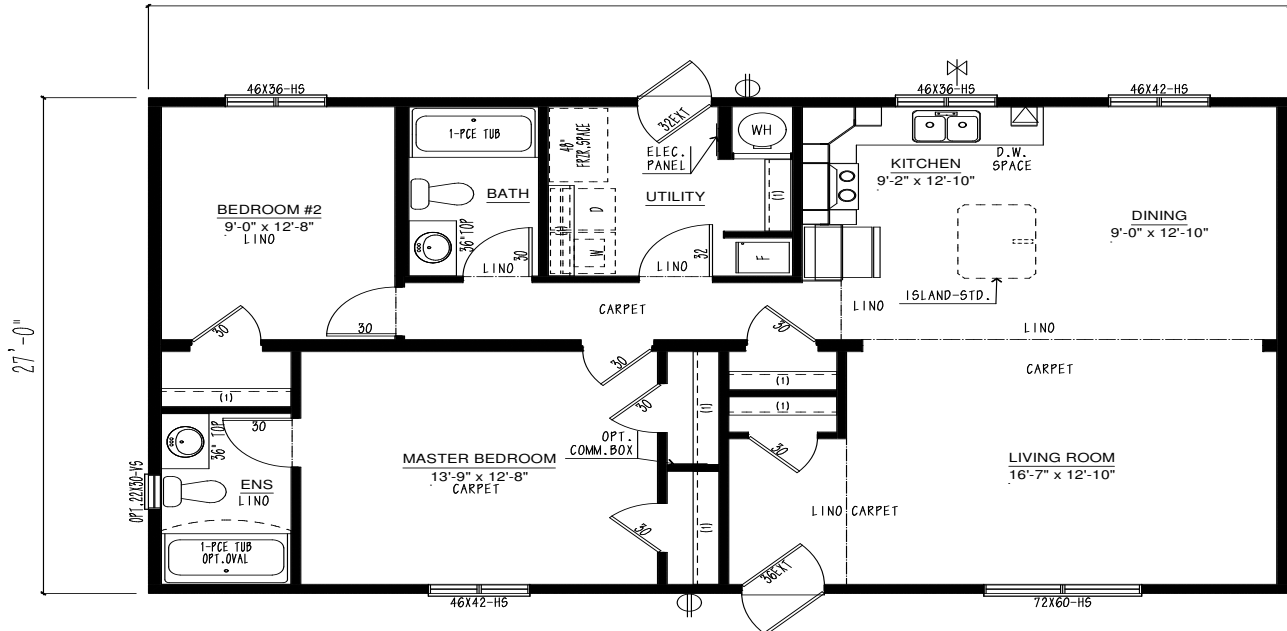
1080 sqft | 3 bed 2 bath
40'-0"



BC2744-102-C



1188 sqft | 2 bed 2 bath
44'-0"

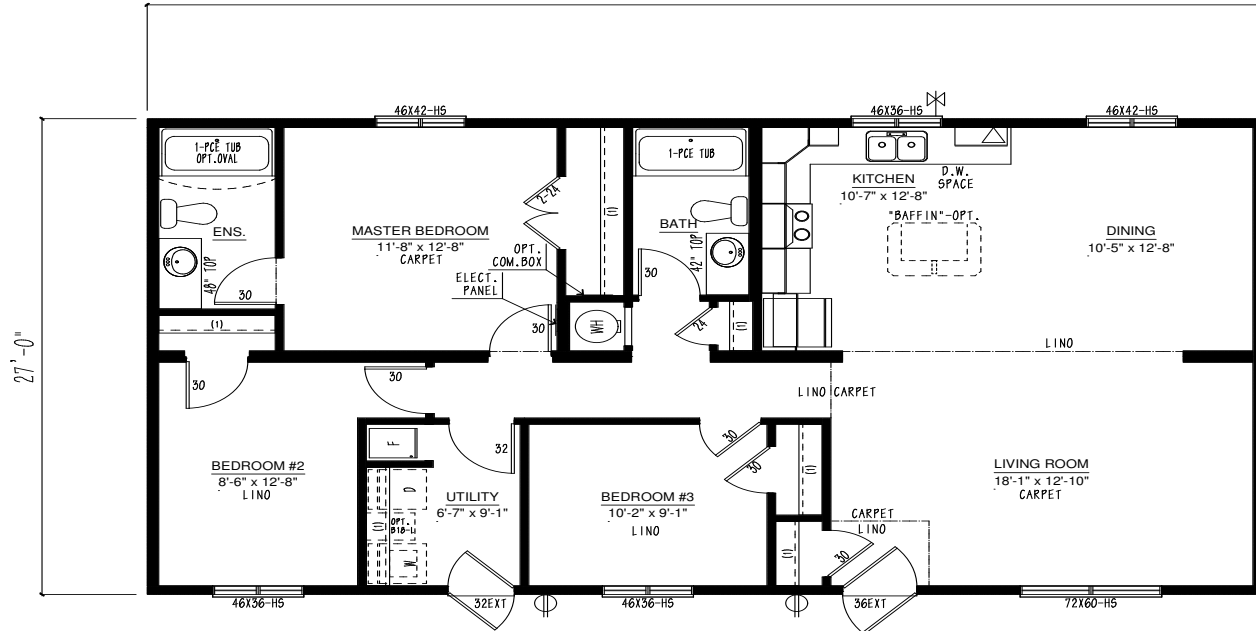


HITCH END

3 bed 2 bath | 1296 sqft

BC2748-102-C

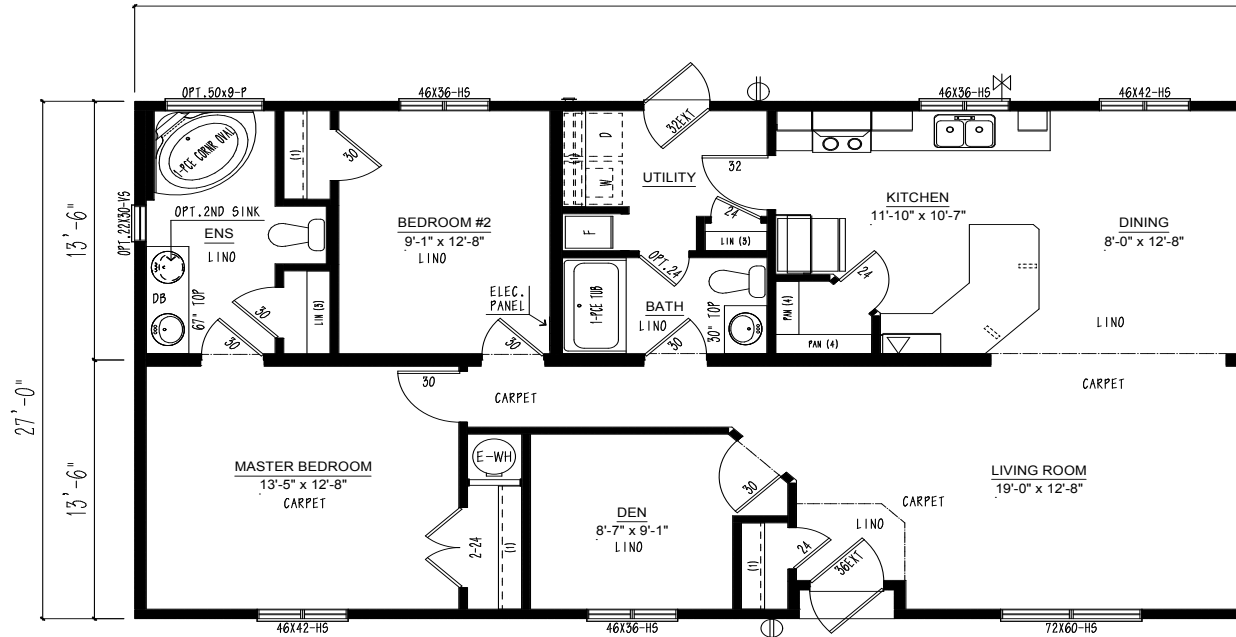
48'-0"



2 bed 2 bath | 1296 sqft

BC2748-104-C

48'-0"



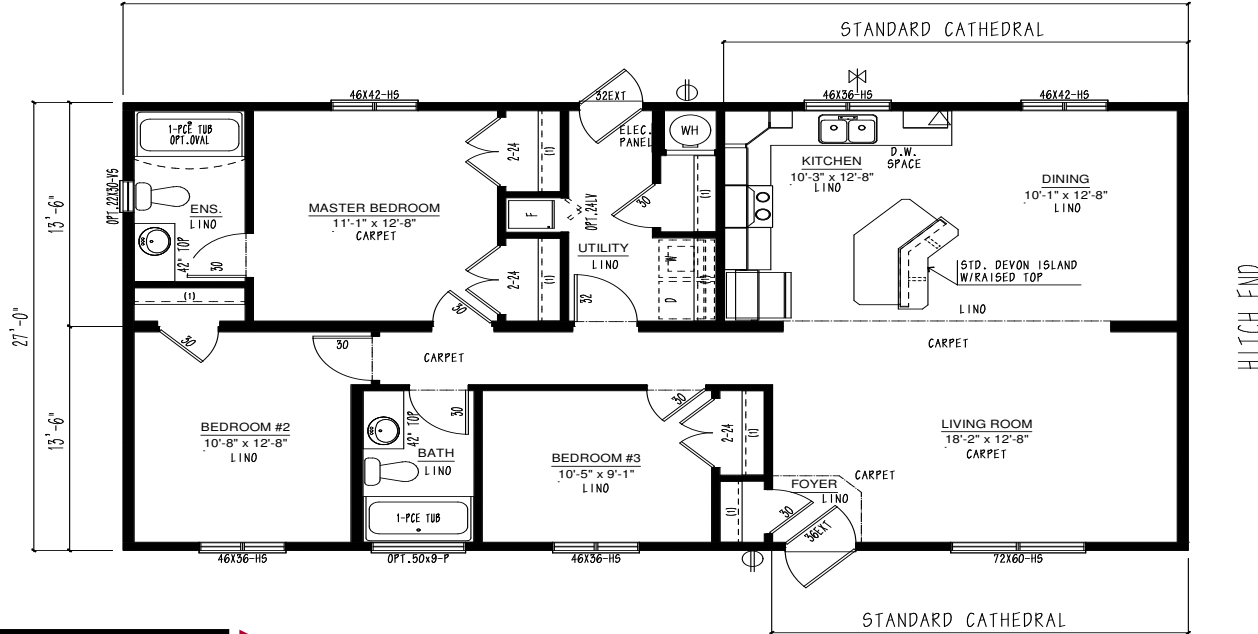
HITCH END

BC2748-105-C



1296 sqft | 3 bed 2 bath

48'-0"

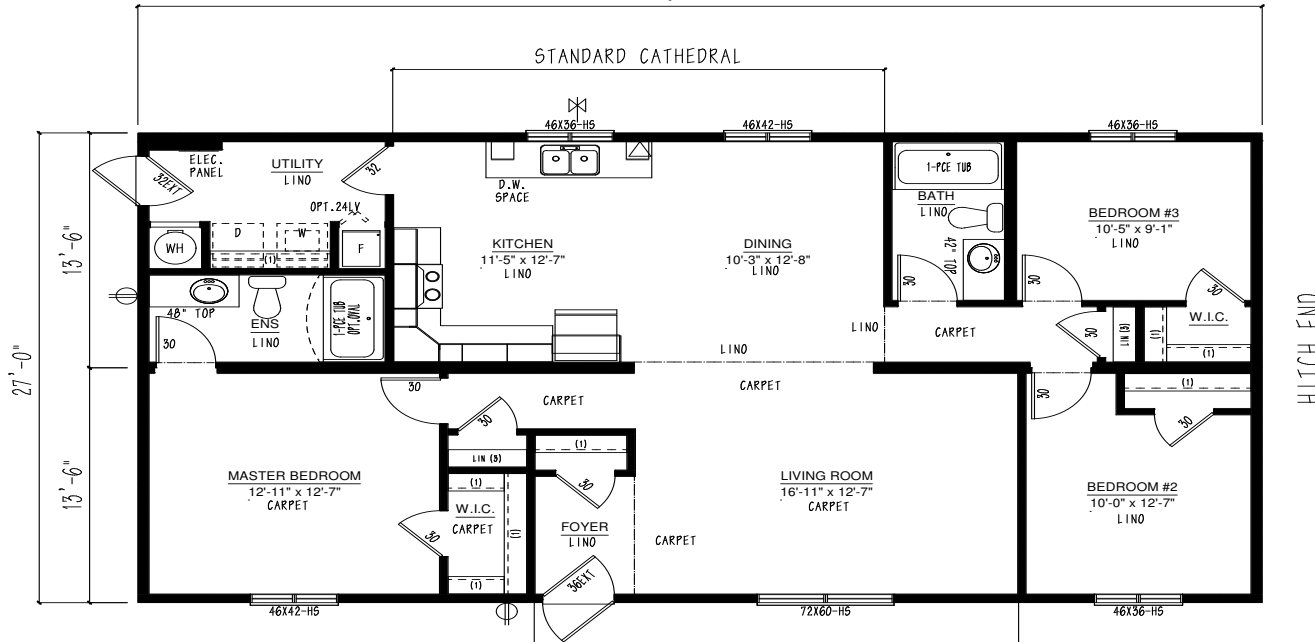


BC2750-100-C



1350 sqft | 3 bed 2 bath

50'-0"

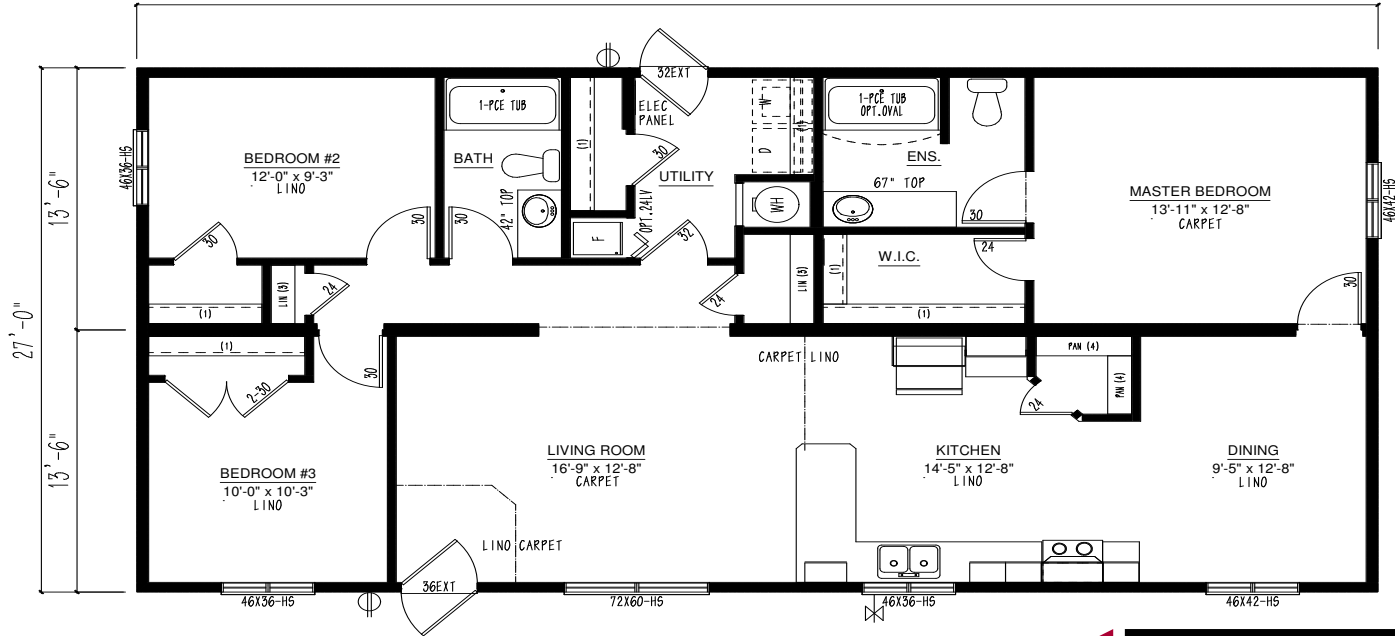


Plans are subject to change

3 bed 2 bath | 1404 sqft

BC2752-102-C

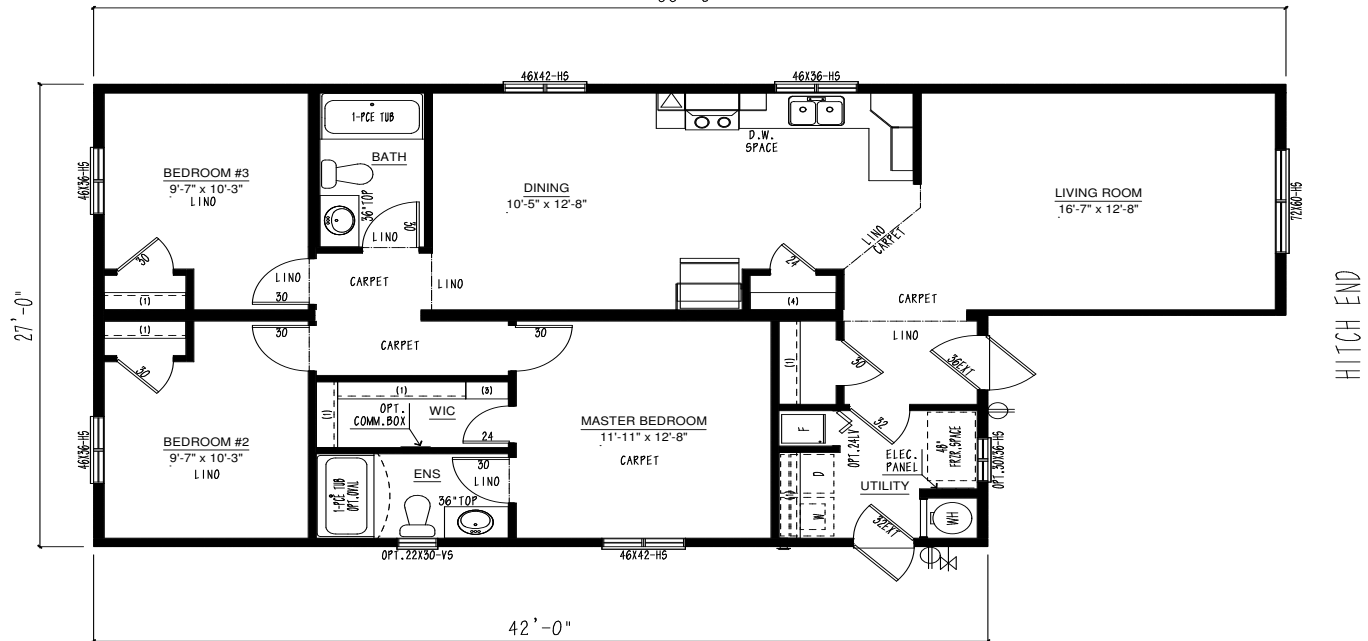
52'-0"



3 bed 2 bath | 1512 sqft

BC2756-104-C

56'-0"



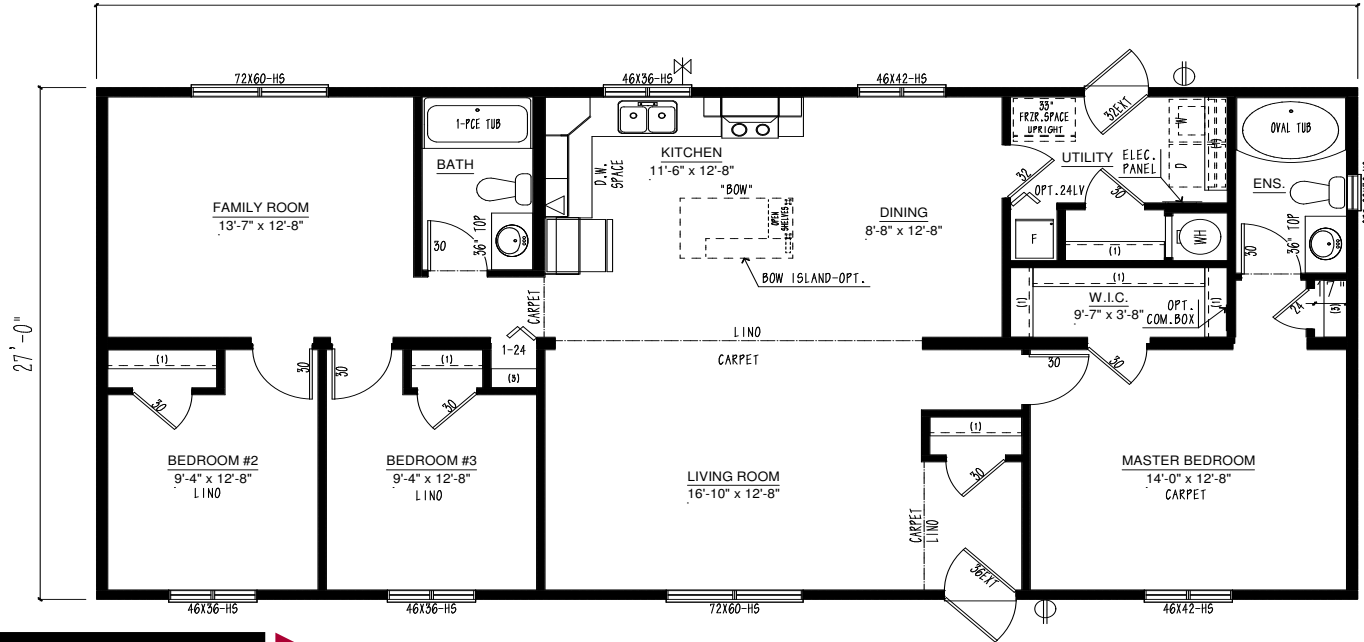
42'-0"

BC2756-105-C



1512 sqft | 3 bed 2 bath

56'-0"

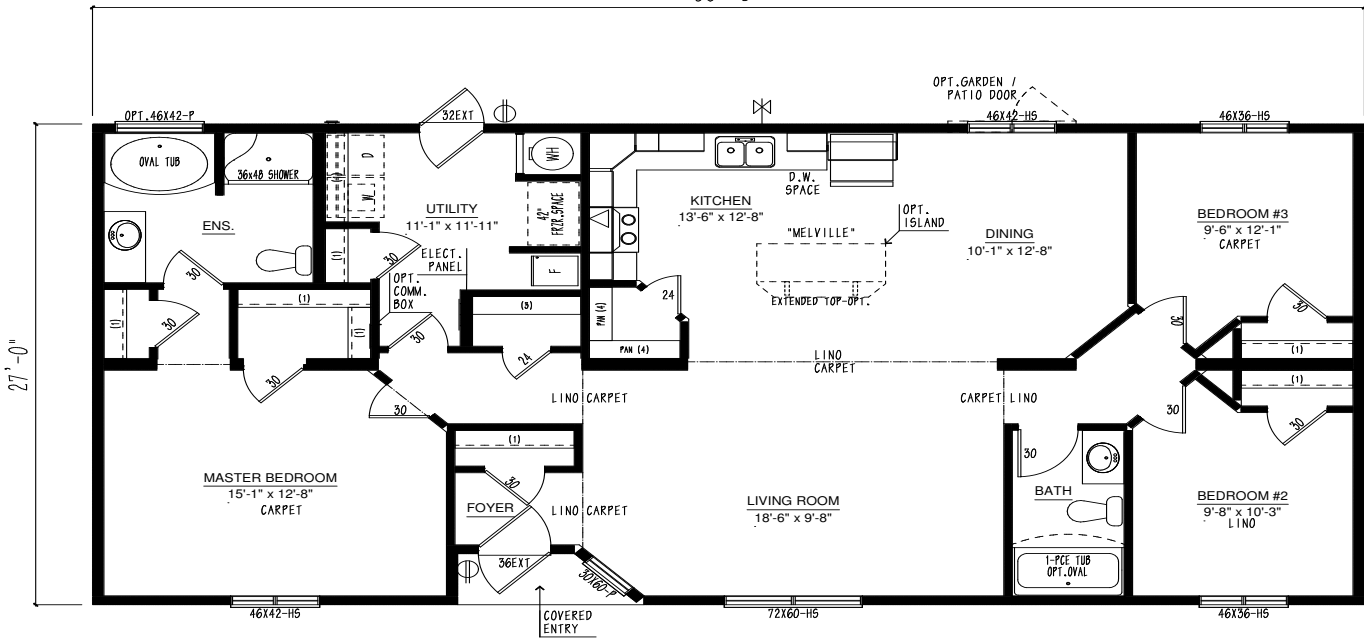


BC2756-107-C



1512 sqft | 3 bed 2 bath

56'-0"

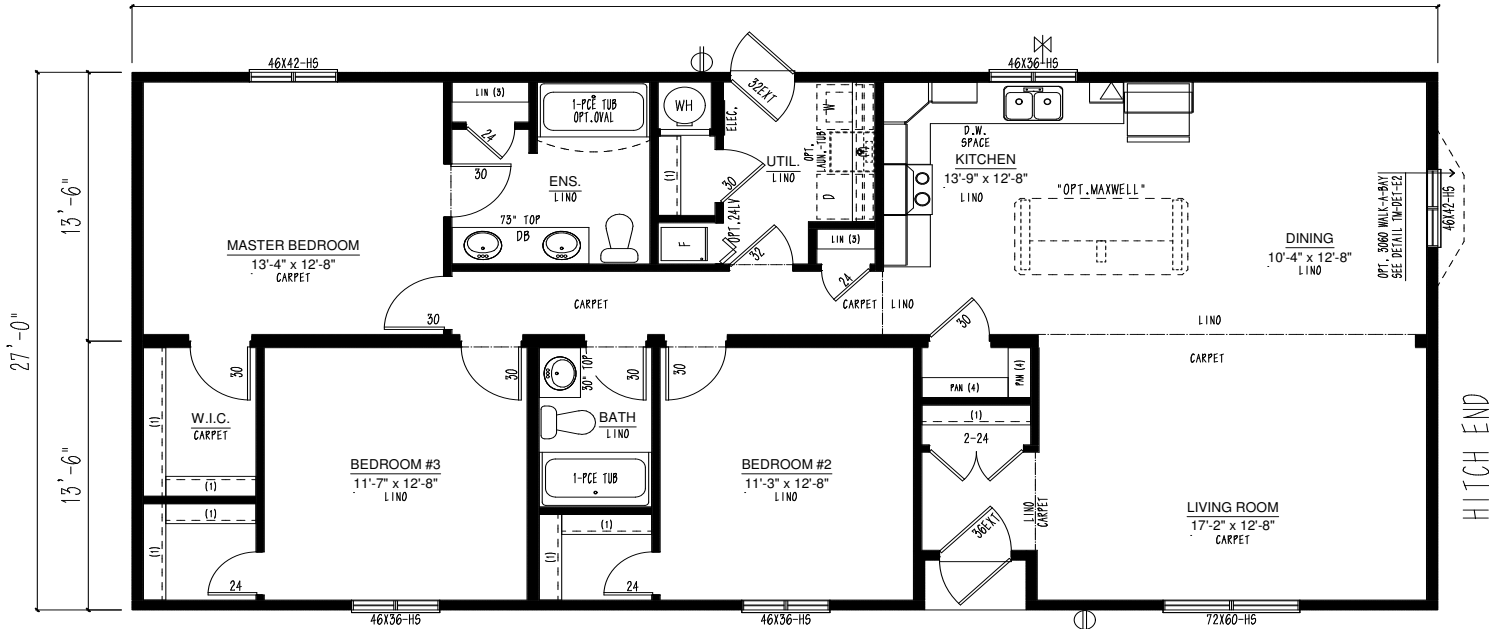


Plans are subject to change

3 bed 2 bath | 1566 sqft

BC2758-103-C

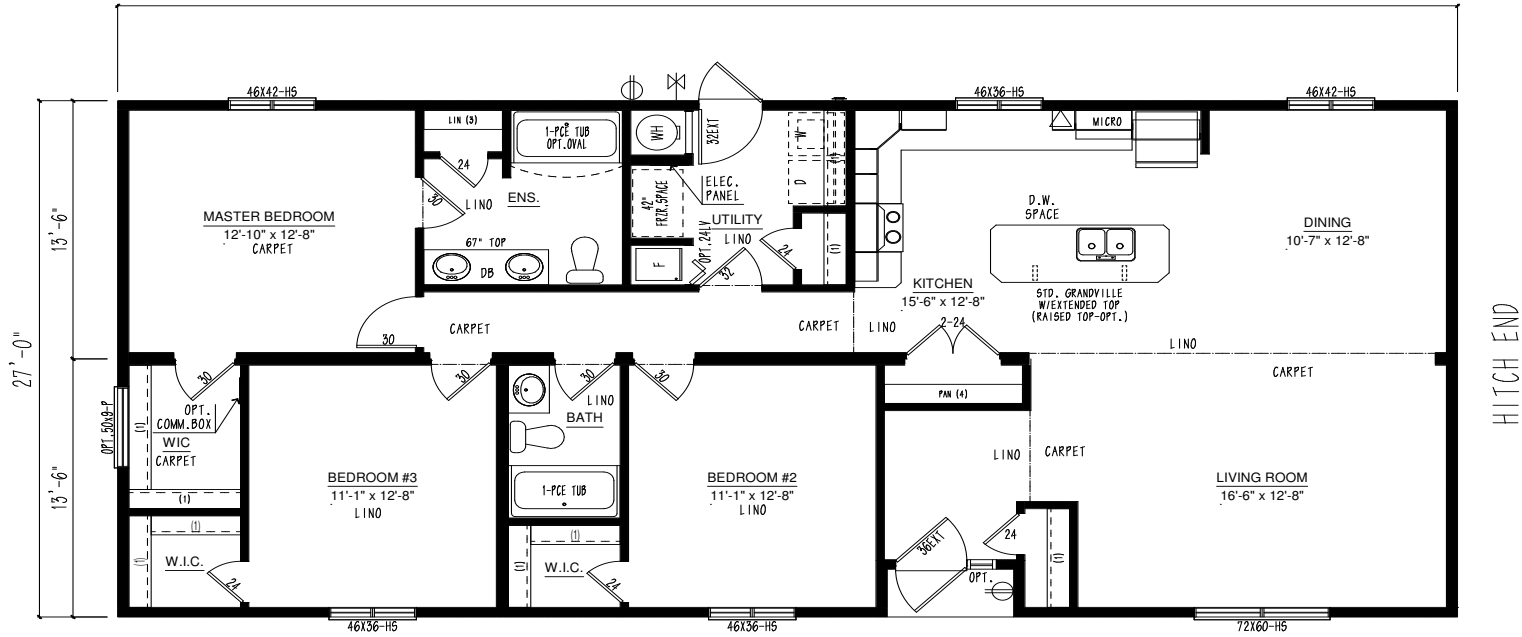
58'-0"



3 bed 2 bath | 1620 sqft

BC2760-100-C

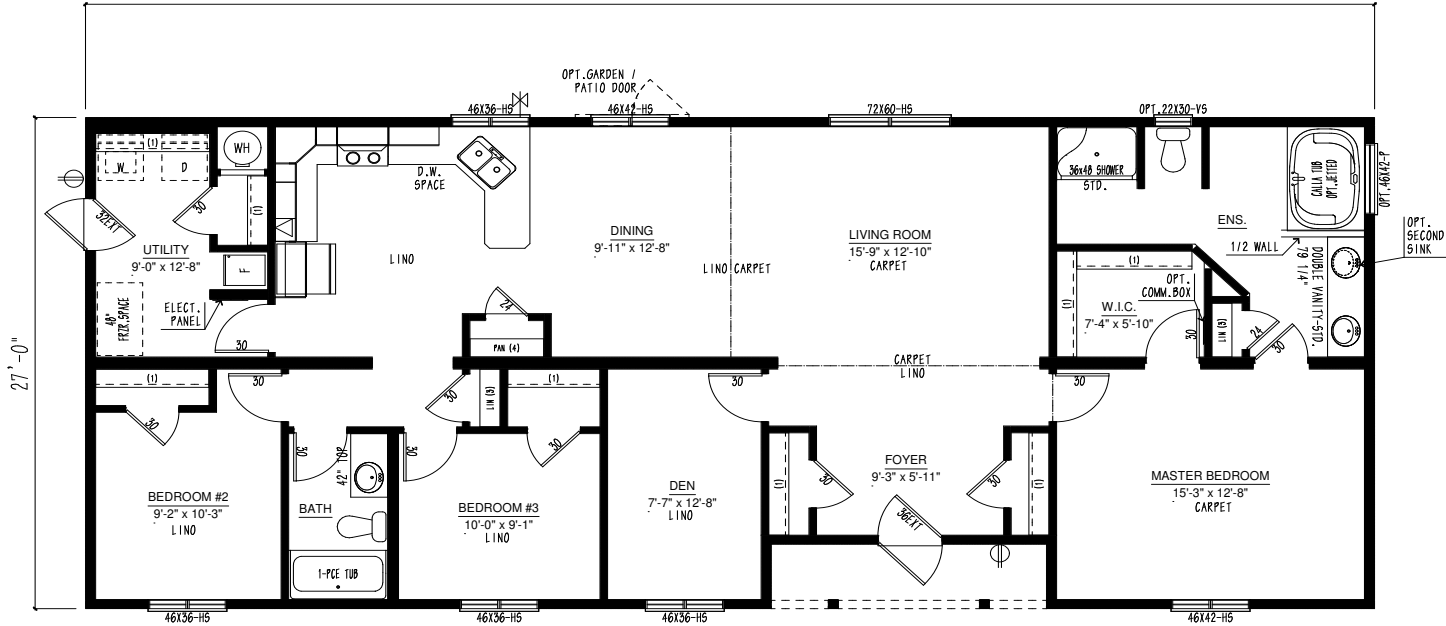
60'-0"



BC2764-100-C



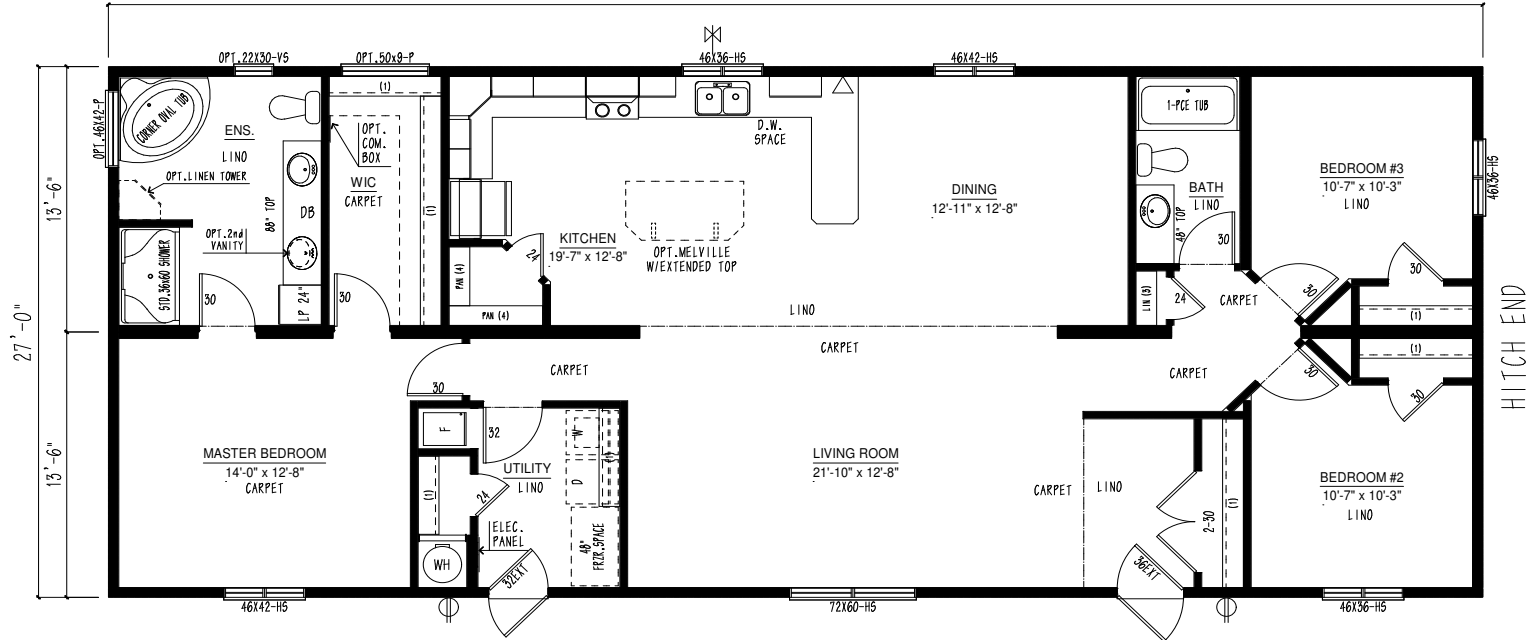
1728 sqft | 3 bed 2 bath
64'-0"



BC2766-101-C



1782 sqft | 3 bed 2 bath
66'-0"

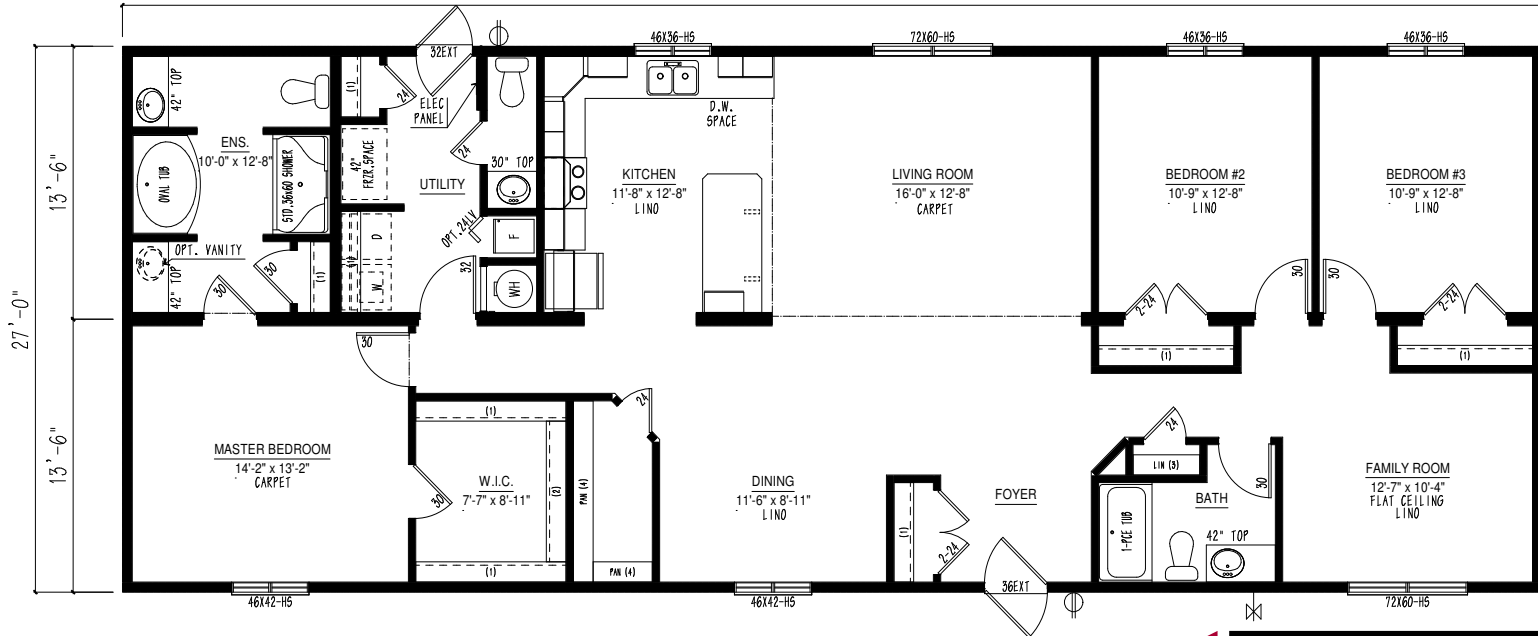


Plans are subject to change

3 bed 2 bath | 1824 sqft

BC2772-100-C

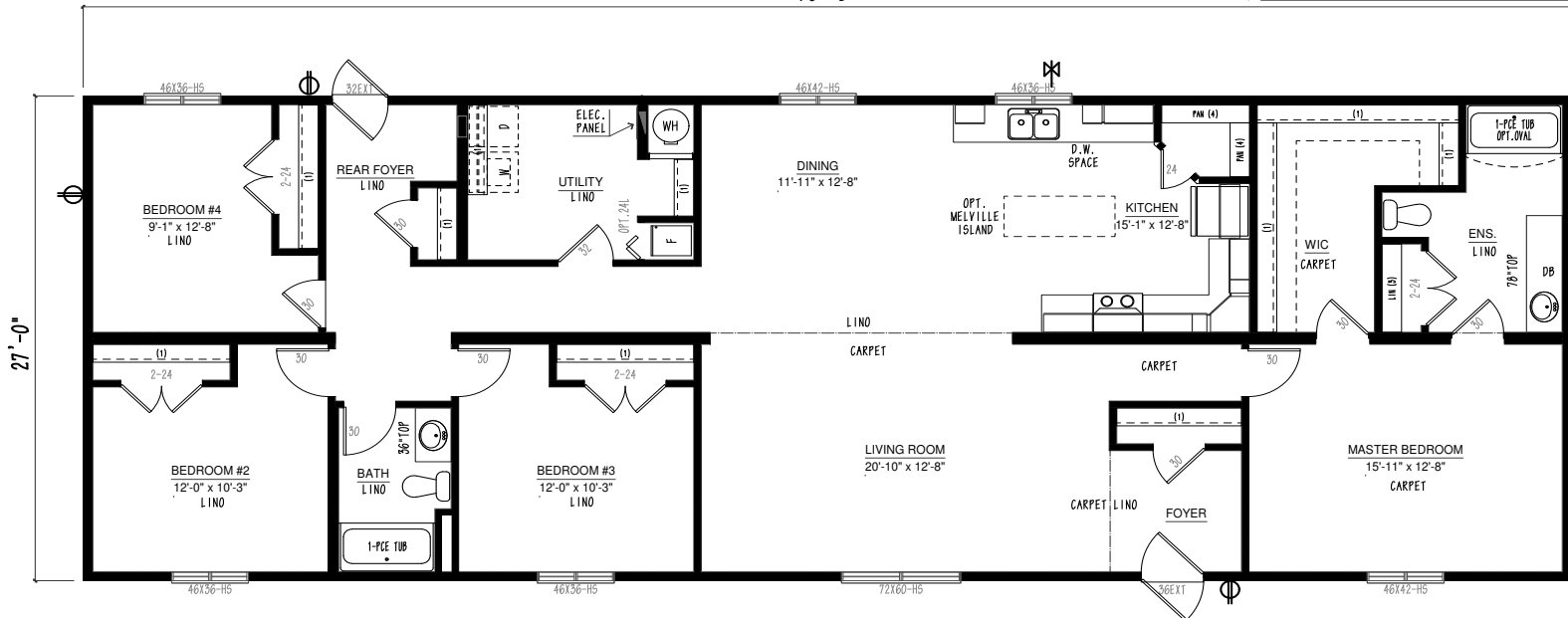
72'-0"



3 bed 2 bath | 1824 sqft

BC2776-100-C

76'-0"



HITCH END

Notes



Construction Standards

- 2.25/12 roof pitch (0.82 interior pitch) @ 24" O/C with low-slope shingle application
- 7/16" roof sheathing
- Ground Snow Load: 80psf
- Residential, maintenance free vinyl siding
- Lifetime Warranty* shingles w/full underlayment
- Engineered tubular steel frame with hitch
- Floor joists: 2x8 @ 16" O/C
- 3/8" exterior wall sheathing (glued & fastened)
- Exterior house wrap
- Colored metal fascia & soffit
- Triple M rigid ext. wall system w/ insulated header
- Frost free tap
- Dedicated receptacle for heat tape at kitchen sink
- 23/32" floor sheathing (glued & fastened)
- 8' walls (2x6 exterior / 2x4 interior)
- 10" vented full perimeter eaves
- 6 mil vapor barrier
- Ceiling insulation: R-40 flat / R-35 Cathedral
- Floor insulation: R-31
- Wall insulation: R-22
- Rufftex gyproc ceilings
- Vaulted ceilings - living room, dining room, kitchen & family room (plan specific)
- 40 US gallon electric HWT
- Carpet with upgrade underlay in living room, family room and master bedroom

- Foam-back lino (fully glued & rolled) remainder of home
- Convertible gas furnace with electronic ignition
- Coil cavity under furnace
- Plumbed for washer, wired for dryer
- 100-amp electric service panel
- 1 1/2" conduit from draw side of panel through floor
- Arc fault breakers
- 36" front and 32" rear exterior doors
- Screen doors
- White Clermont bi-fold closet doors (plan specific)
- White Clermont interior doors
- 32" utility room door
- Standard carriage light & GFI receptacle at all ext doors (shipped loose)
- Braided water lines at sinks & toilets
- Main water shut-off inside home at kitchen sink
- All fans & vents through roof

Distinctive Standard Features

- Low E Argon windows & sills complete w/ screens
- Craftsmen accent boards around standard windows (front & curbside)
- 1/2" vinyl drywall panels with taped seams
- Straight roof line
- Cordless cellular blinds throughout
- Décor switches
- River dinette light in the dining room
- LED lighting throughout
- Cotinuous rod shelving in closets

Modern Crafted Kitchens

- Black 30" deluxe range with power range hood
- Black 18 cubic ft. frost free fridge
- Adjustable track lighting (2)
- Modular cabinets with adjustable shelving
- Spacious pantry in kitchen (where applicable)
- PVC Cabinet doors with soft-close hinge
- Crown molding on cabinets
- Laminate countertops with self-edge
- Tight weave pantry shelving
- Single lever faucet with spray
- Single-row subway tile backsplash

Contemporary Baths

- De-humidistat on main bath fan, all other fans on separate switch
- 1-piece smooth back tub/shower combination in main bath & ensuite
- Single-row subway tile backsplash

Optional Features

- Upgrade interior doors
- White silk glass pantry door
- Garden doors
- A/C ready
- Full tile backsplash with decor insert
- Optional stainless steel or white appliances
- Built-in dishwasher
- Nail holes in trim filled
- Infill 5/12 infill hinge roof option



Triple M Housing

www.triplehousing.com

1704 Government Street
Penticton, BC
V2A 7A1