

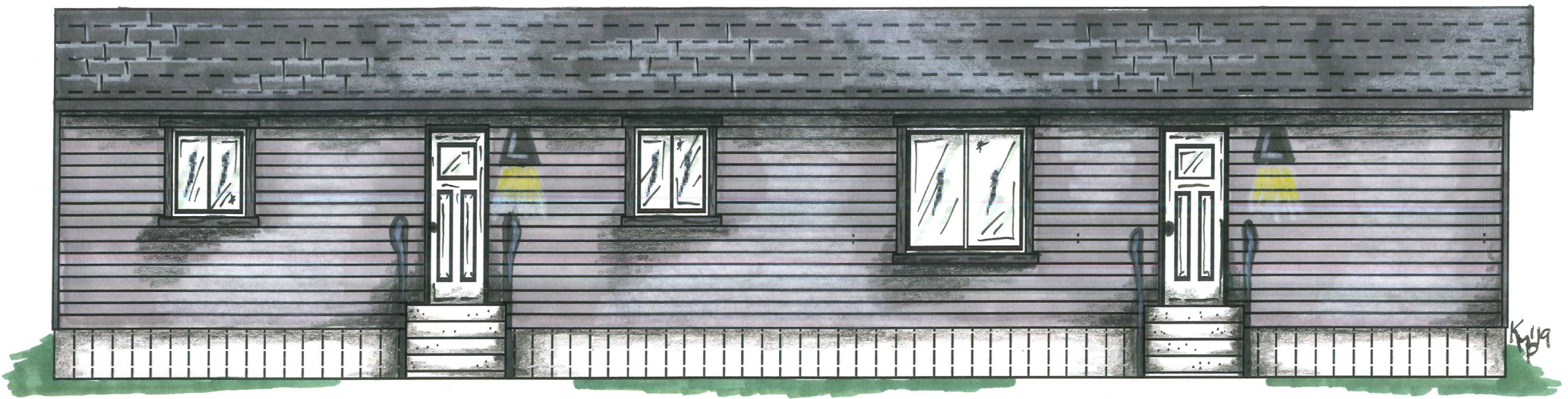
Maplewood



Triple M Housing

Exterior Features

- 4/12 roof pitch
- Maintenance free vinyl siding
- Lifetime Warranty* shingles
- Colored metal soffit & fascia
- Frost free tap
- Exterior house wrap
- Craftsmen accent boards around standard windows on front & curbside of home
- Triple M rigid exterior wall system
- Standard carriage lights



Full list of features and specifications is noted on the back cover

Interior Features

- Decorative wall panels
- Cordless cellular blinds
- Black kitchen appliances
- Adjustable track lighting
- PVC wrapped cabinet doors
- Laminate countertops
- Carpet and foam backed lino
- One Piece tub/shower
- LED lighting throughout

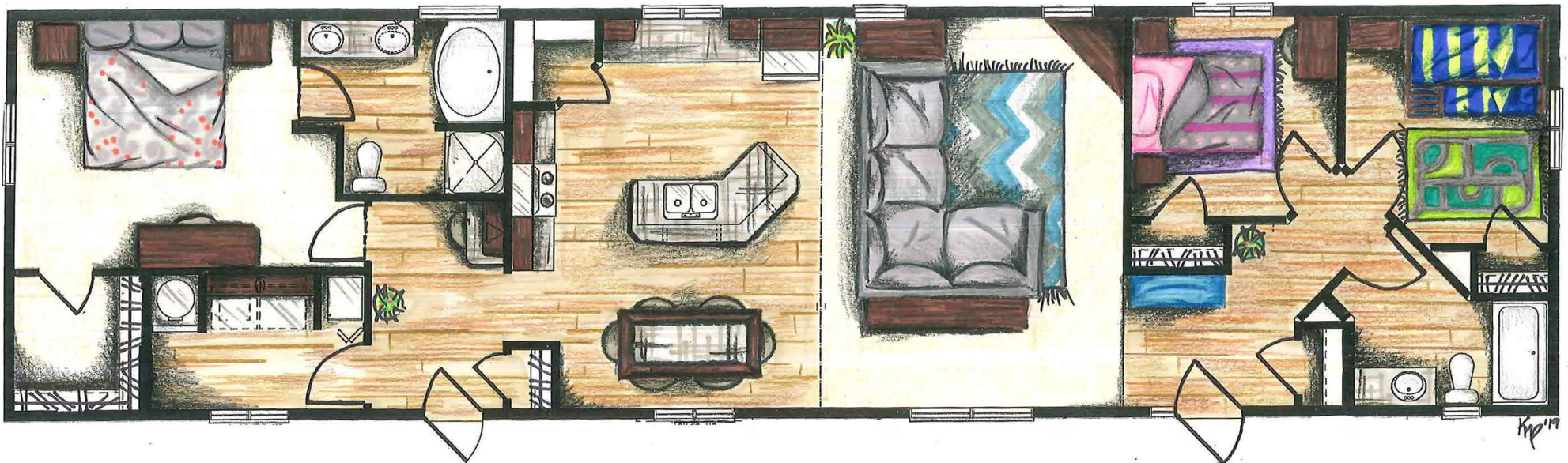
Connected Cubes
Laminate Countertop

Pale Faces-Carpet

Stardust Masonry
Wall Panels

Windsor Taupe-Lino

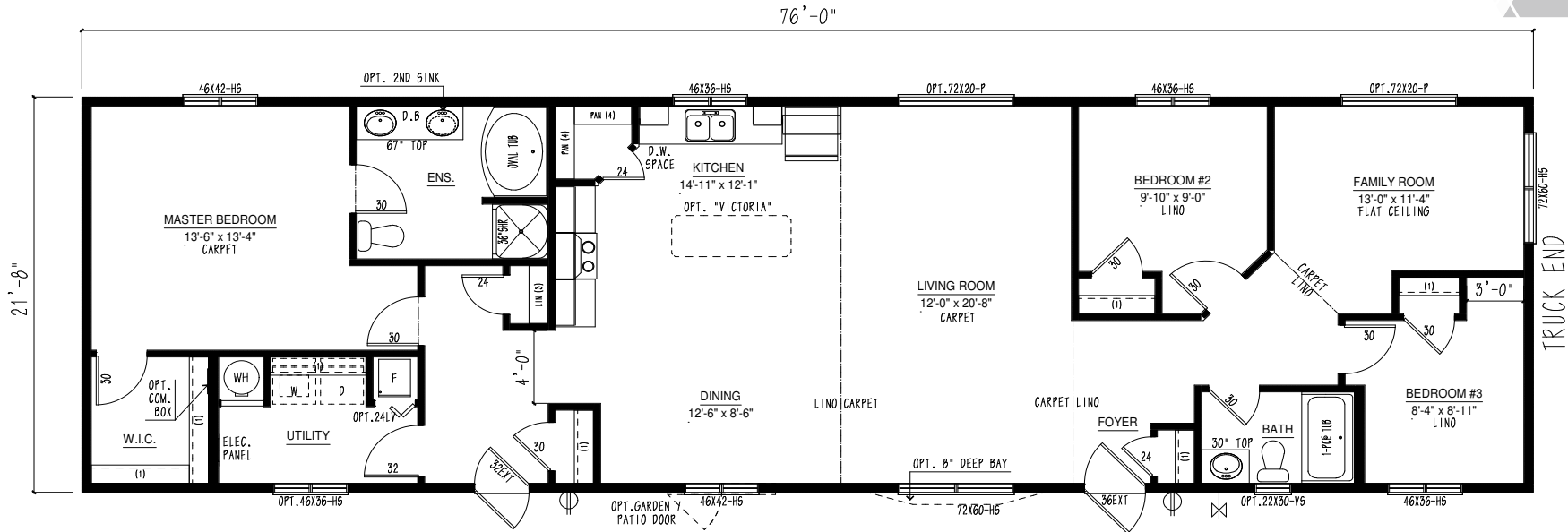
Chocolate Pear-Cabinets



Plans in this brochure are not shown to scale

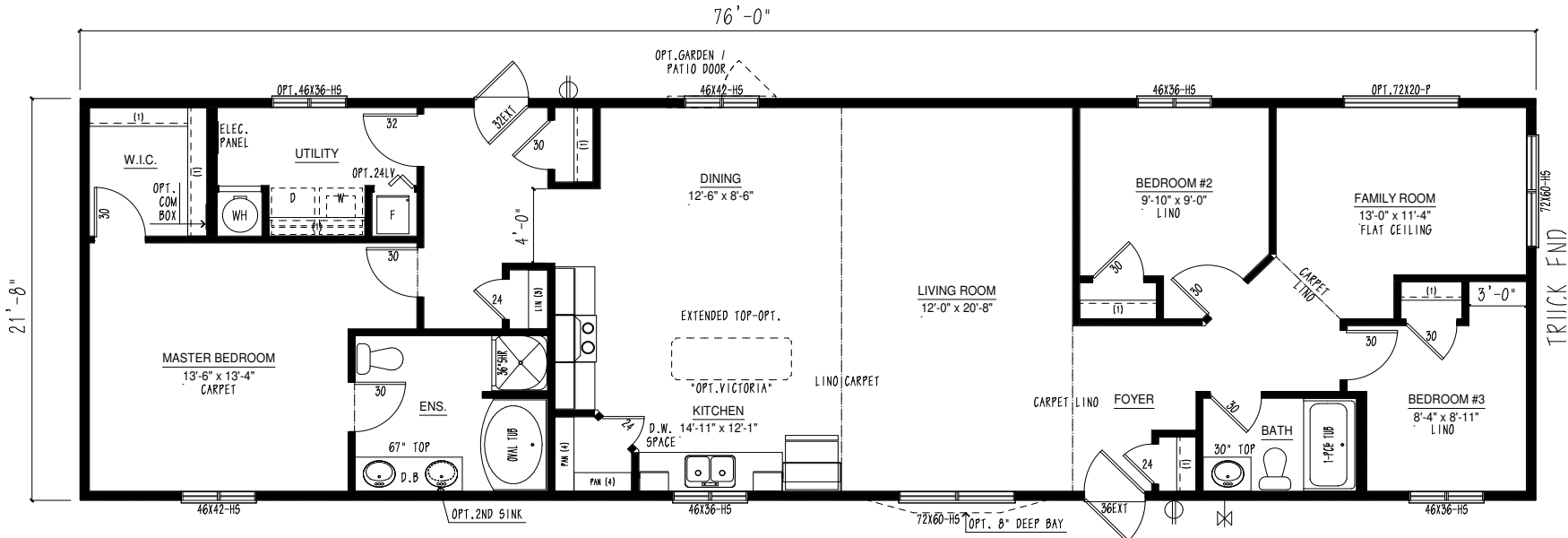
MW2276-266-C

1672 sqft | 3 bed 2 bath



MW2276-262-C

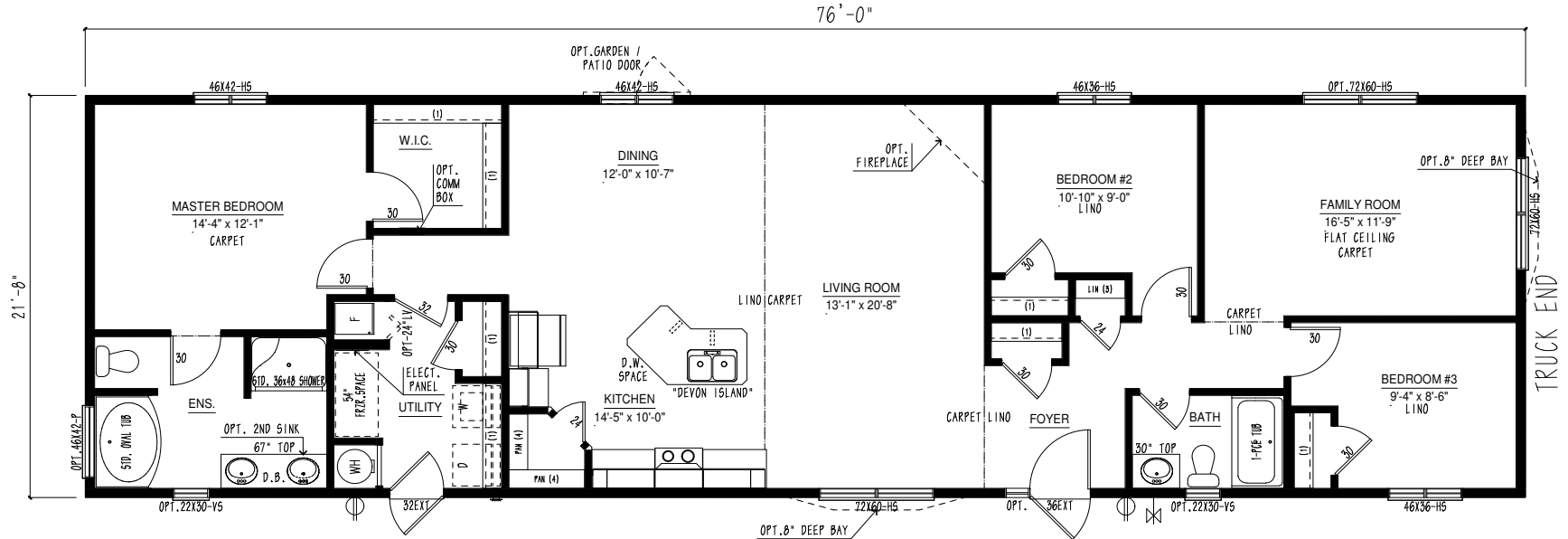
1672 sqft | 3 bed 2 bath



Plans are subject to change

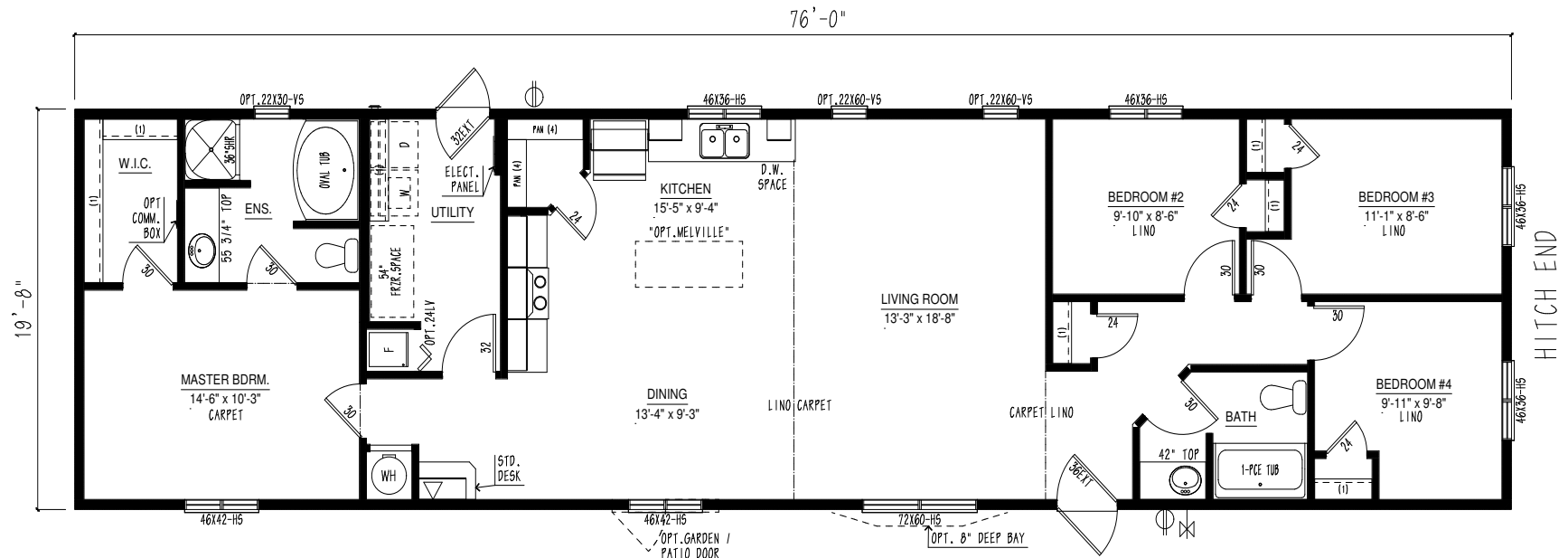
3 bed 2 bath | 1672 sqft

MW2276-258-C

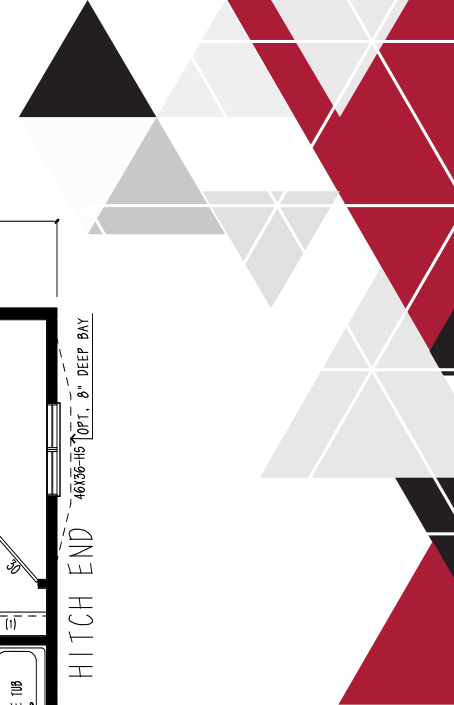


4 bed 2 bath | 1520 sqft

MW2076-282-C



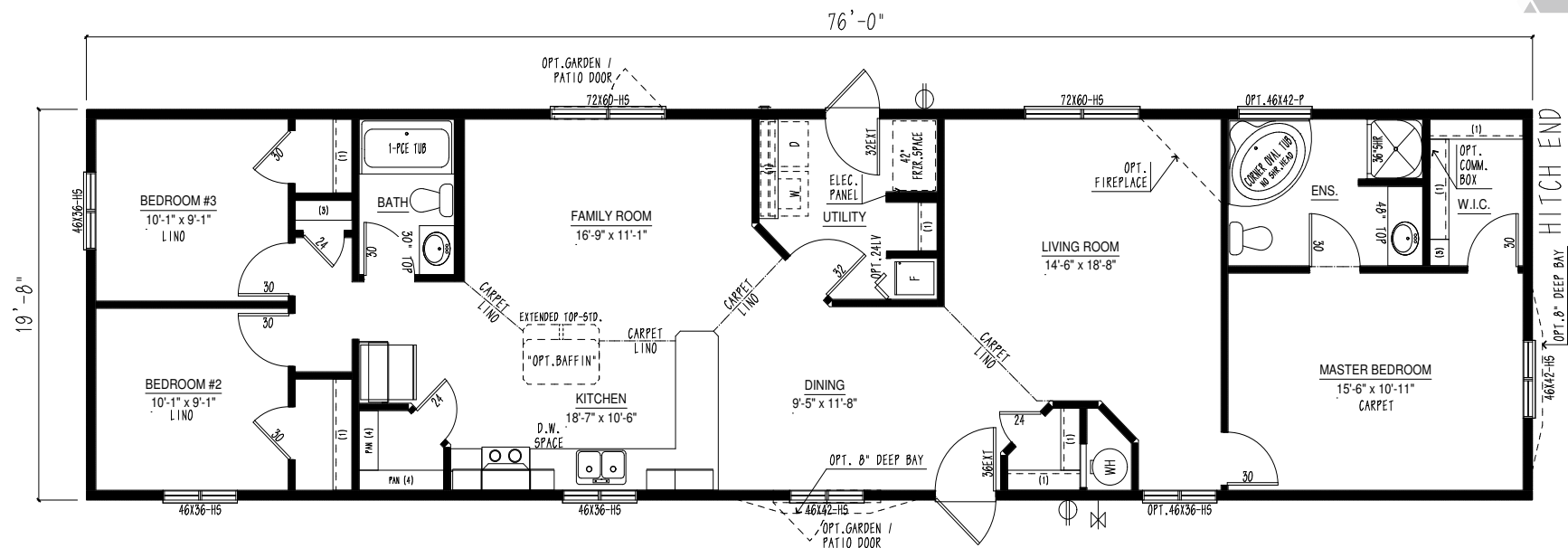
1520 sqft | 3 bed 2 bath



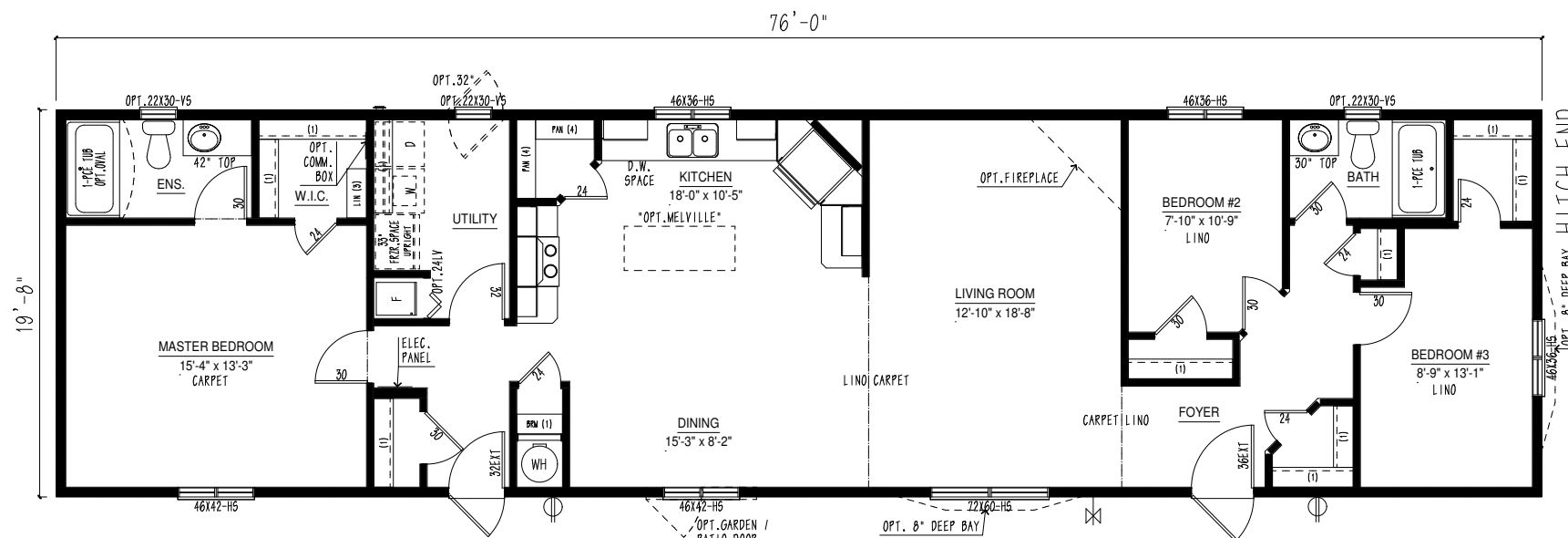
1520 sqft | 3 bed 2 bath



▶ 1520 sqft | 3 bed 2 bath

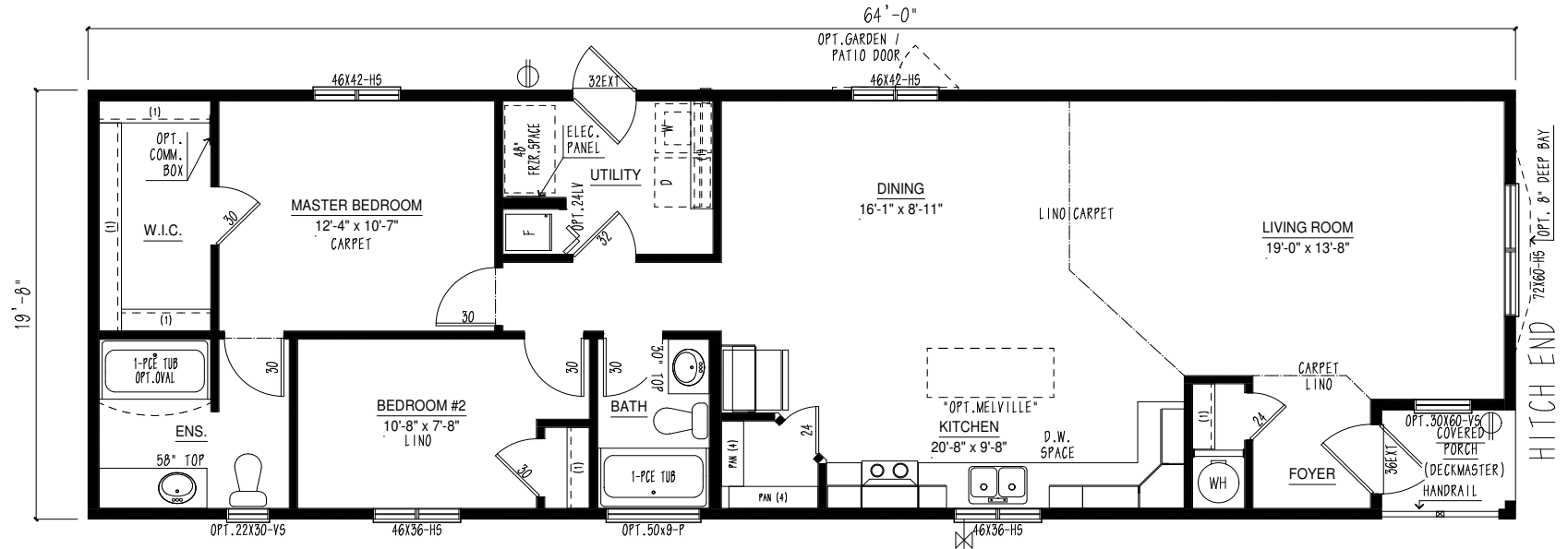


▶ 1520 sqft | 3 bed 2 bath



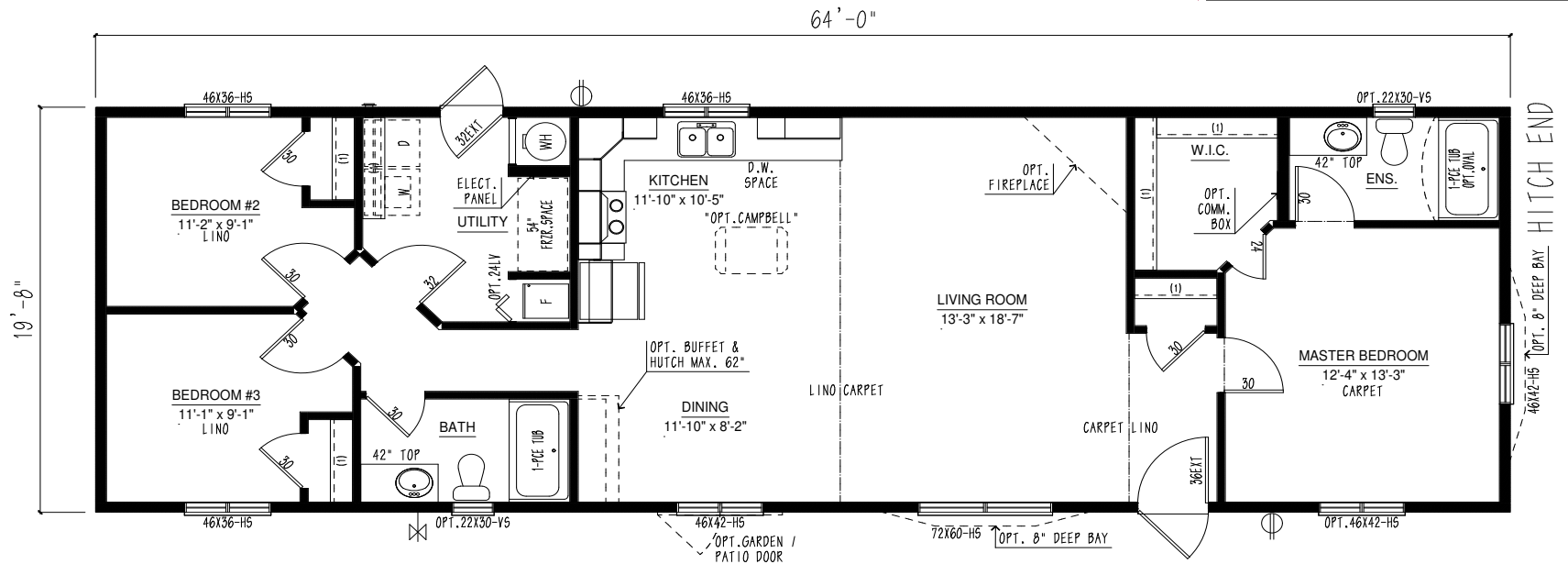
2 bed 2 bath | 1280 sqft

MW2064-136-C



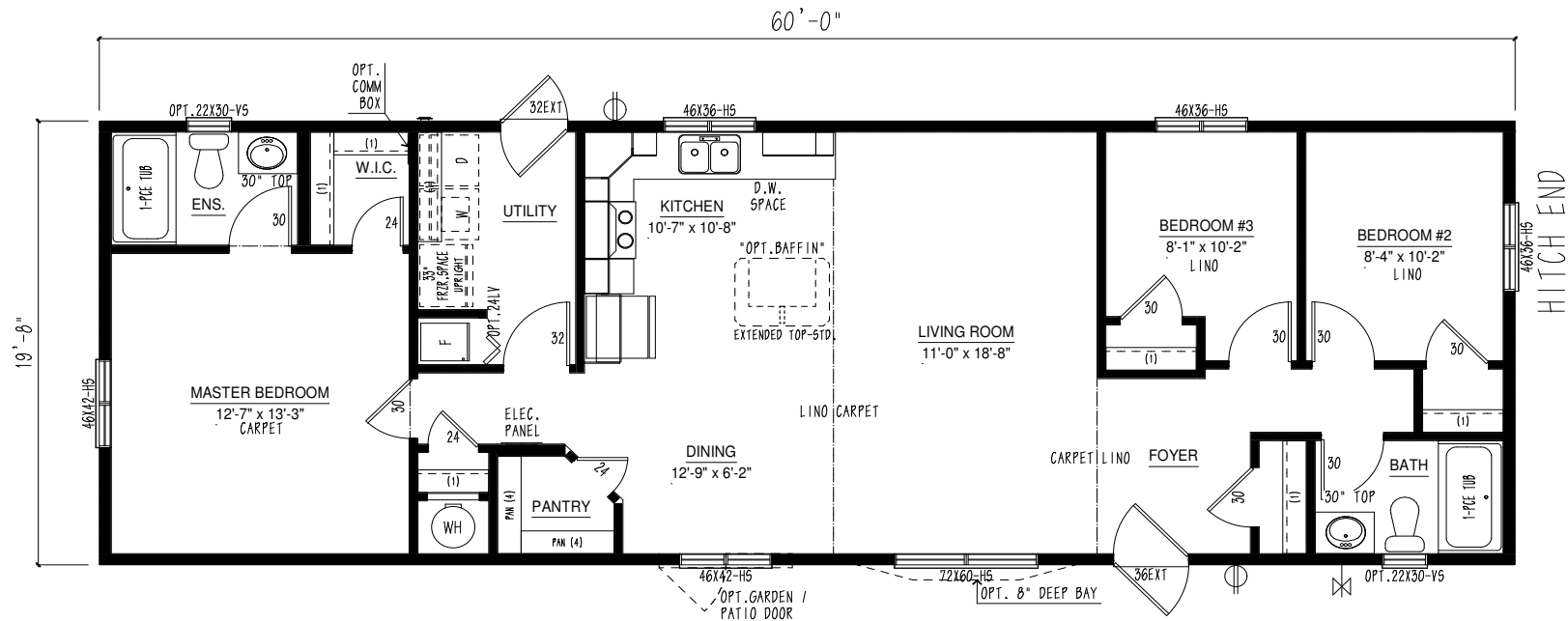
3 bed 2 bath | 1280 sqft

MW2064-133-C



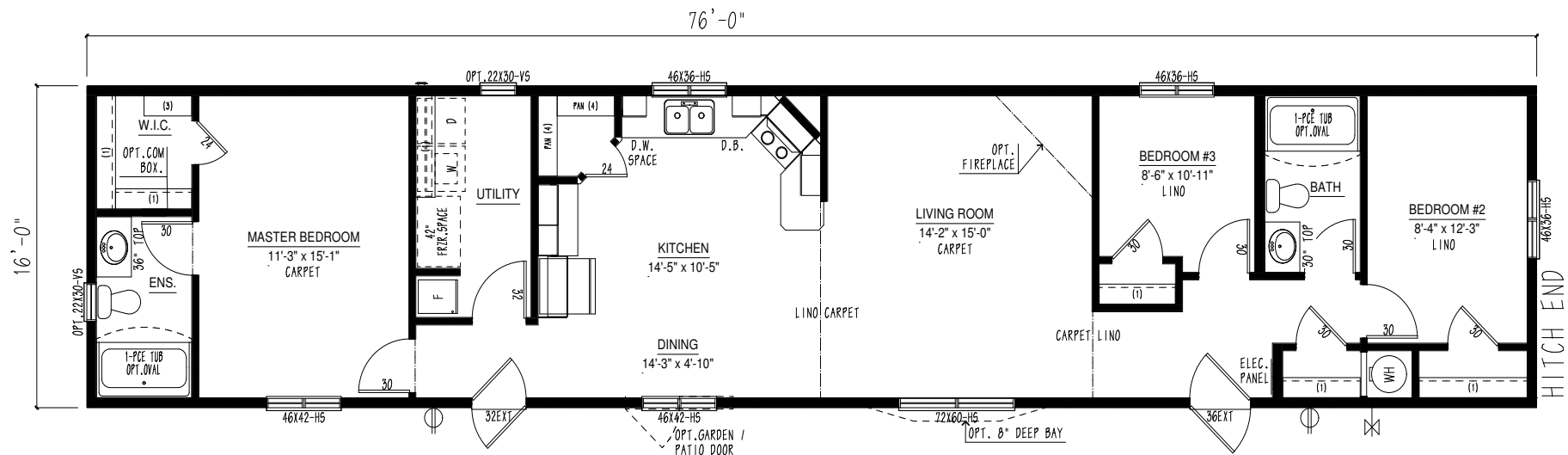
MW2060-117-C

1200 sqft | 3 bed 2 bath



MW1676-394-C

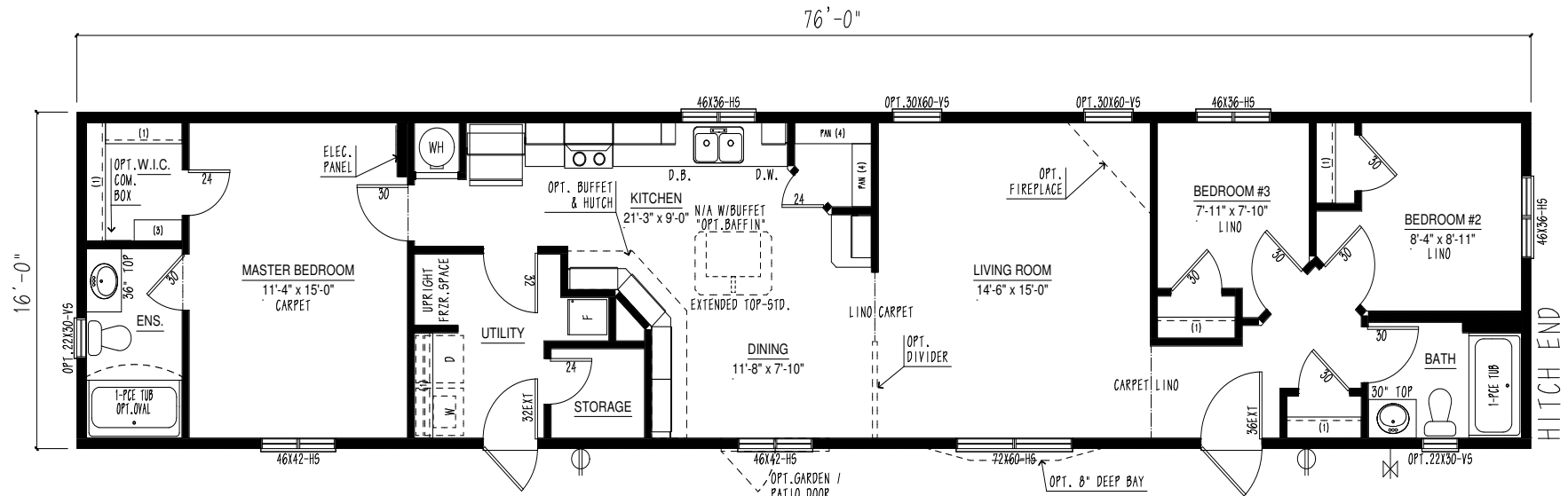
1216 sqft | 3 bed 2 bath



Plans are subject to change

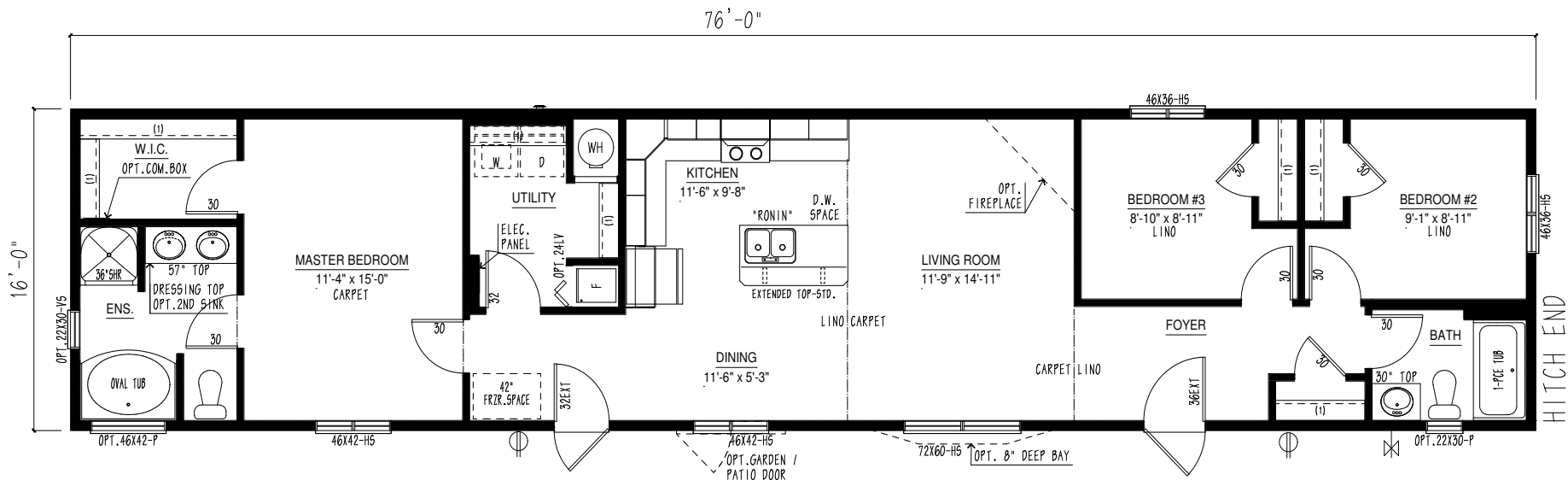
3 bed 2 bath | 1200 sqft

MW1676-385-C



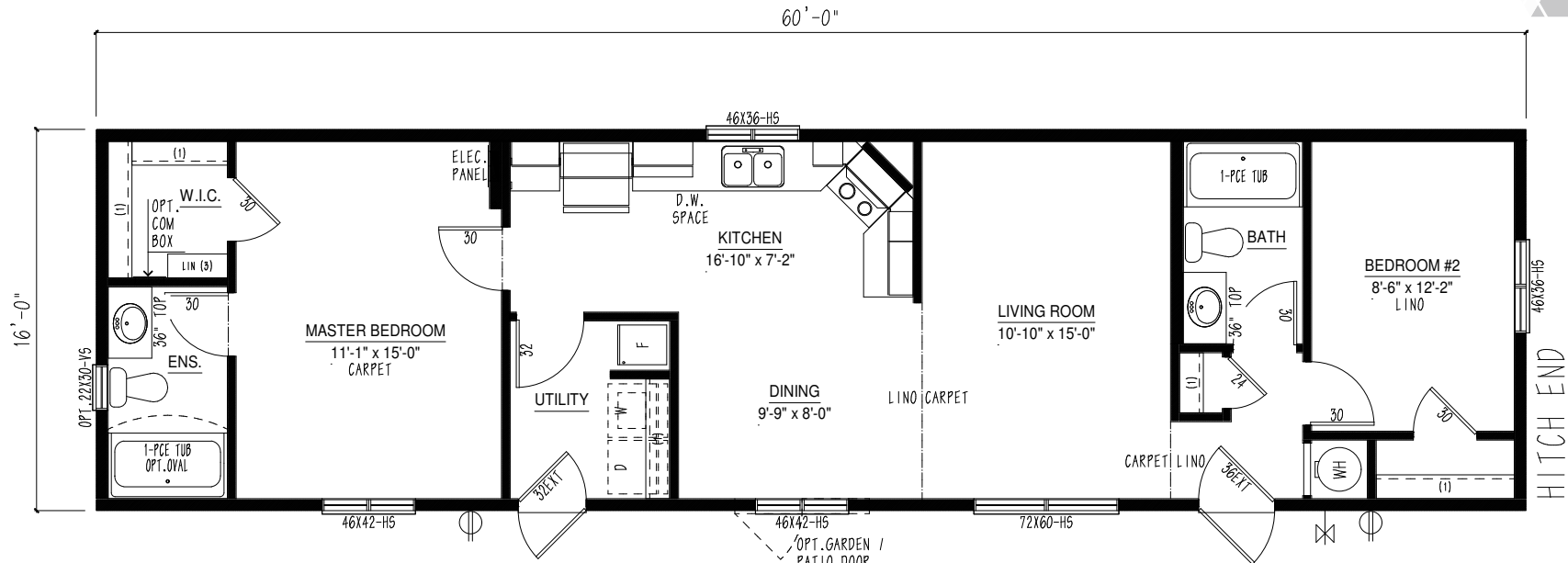
3 bed 2 bath | 1216 sqft

MW1676-369-C



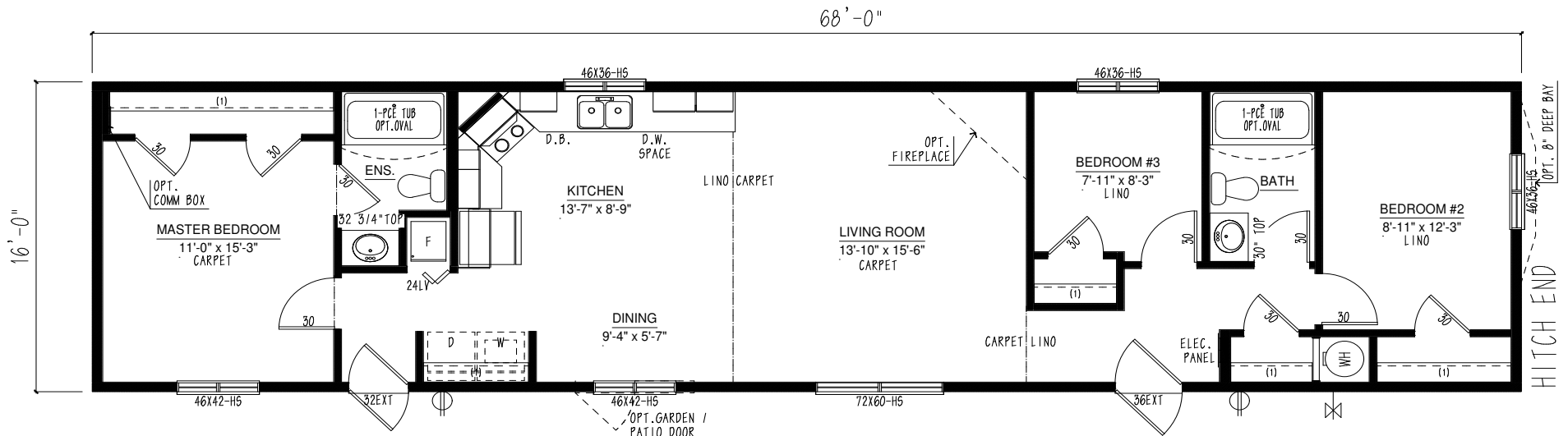
MW1668-310-C

1088 sqft | 3 bed 2 bath

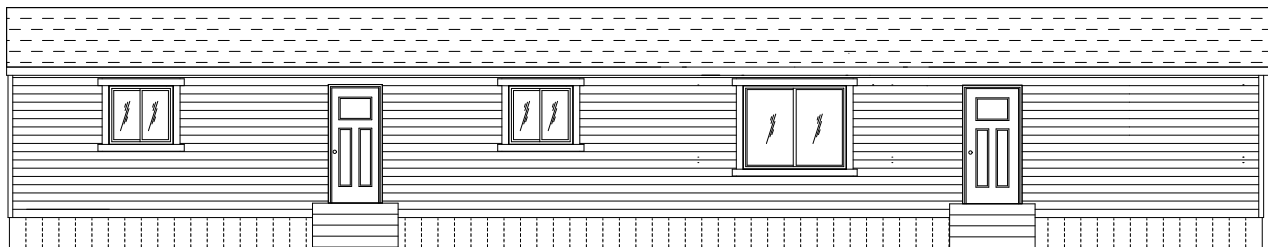


MW1660-309-C

960 sqft | 2 bed 2 bath

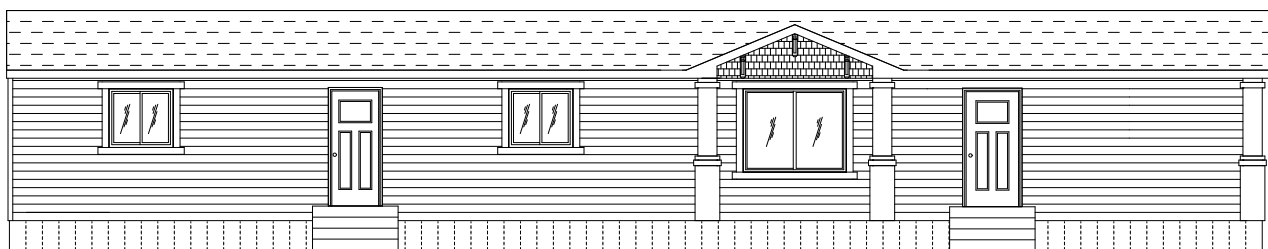
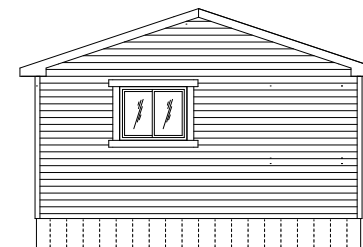


Plans are subject to change



Standard Exterior

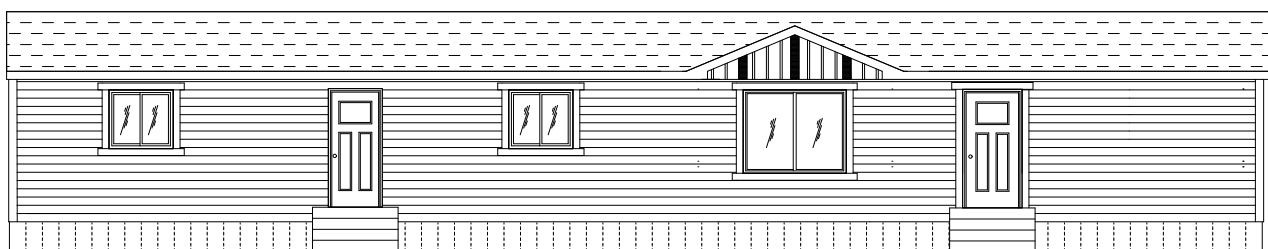
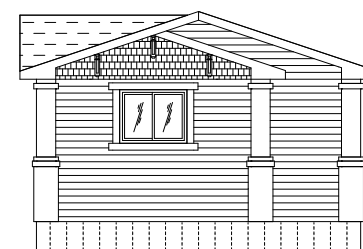
- Standard exterior includes craftsmen accent boards around standard windows front & curbside



Optional Exterior "A"

Optional Exterior "A" Includes:

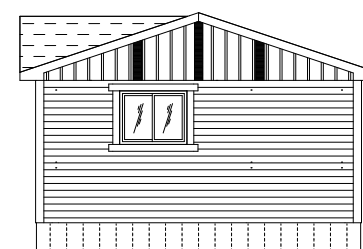
- M-Series pillar package 1-corner and 4-flats
- Dormer with cut-out eave over living room window
- Extra ladder over front window
- PVC shakes with eave supports in dormers
- Craftsmen accent boards around standard windows front & curbside



Optional Exterior "B"

Optional Exterior "B" Includes:

- 4-Smart trim corners
- Dormer with cut-out eave over living room window
- Vertical PVC board & batten in side dormer and front gable
- Craftsmen accent boards around standard windows front end, curbside and front exterior door





Construction Standards

- 4/12 roof pitch
- Residential, maintenance free vinyl siding
- Lifetime Warranty* shingles w/full underlayment
- Tubular Steel frame with hitch 16', 20'
- 16' wide - Floor joists: 2x10 @ 24" o/c
- 20' wide - Floor joists: 2x10 @ 16" o/c
- Engineered wood web floor truss system: 22'
- Exterior wall sheathing (glued and fastened)
- Coloured metal soffit and fascia
- Triple M rigid exterior wall system
- Frost free tap
- Dedicated receptacle for heat tape at kitchen sink
- 23/32" floor sheathing (glued and fastened)
- 8' walls
- 2x6 exterior walls / 2x4 interior walls
- Exterior house wrap
- Insulation - Ceiling: R-60 flat/R32 Cathedral, Floor: R-40, Walls: R-22
- 1/2" stipple gyproc ceiling
- Vaulted ceiling - living room, dining room and family room (plan specific)
- Carpet with upgrade underlay in living room, family room and master bedroom
- Foam-back linoleum (fully glued and rolled)
- Convertible Gas Furnace

- Coil cavity under furnace
- 40 Us gallon electric HWT
- Plumbed for washer, wired for dryer
- 100 amp electric service panel
- 1 1/2" conduit from draw side of panel through floor
- Arc fault breakers
- 36" front and 32" rear exterior doors w/ screen doors
- White Clermont interior doors
- 32" utility room door
- Standard carriage light at all exterior doors
- Exterior GFI receptacle at all exterior doors
- Main water shut-off inside home at the kitchen sink
- Braided water lines at sink and toilets

Distinctive Standard Features

- Low E Argon windows and sills complete with screens
- 12" side eave with venting
- Craftsmen accent boards around windows (front and curbside)
- Decorative wall panels with tape seams
- Straight roof line
- Cordless cellular blinds throughout
- Décor switches
- River Dinette light in dining room
- LED lighting throughout
- Continuous rod shelving in closet

Modern Crafted Kitchens

- Black 30" deluxe range with power range hood
- Black 18 cubic ft. frost free fridge
- Adjustable track lighting
- Modular cabinets with adjustable shelving
- Single lever faucet with spray
- PVC cabinet doors throughout
- Laminate countertops with self edge
- Tight weave pantry shelving

Contemporary Baths

- De-humidistat on main bath fan, all other fans on separate switch
- 1-piece smooth back tub/shower combination in main bath and ensuite

Optional Features

- Upgrade interior doors
- White Silk glass pantry door
- Garden doors
- Cabinet crown moulding
- Built-in dishwasher
- 16" overhang at rear
- Insulated storm door
- A/C ready
- Nail holes in trim filled
- 3" PVC cove mould at ceiling (vaulted area's only)
- Upgrade lighting options