

Meridian



Triple M Housing

Exterior Features

- 4/12 roof pitch
- Maintenance free vinyl siding
- Lifetime Warranty* shingles
- Colored metal soffit & fascia
- Frost free tap
- Exterior house wrap
- Craftsmen accent boards around standard windows on front & curbside of home
- Triple M rigid exterior wall system
- Cement Board and Stacked stone optional upgrades



Optional Hip Roof

Full list of features and specifications is noted on the last page

Interior Features

- Decorative wall panels
- Cordless cellular blinds
- Black 30" deluxe range with power range hood
- Black 18 cubic ft. frost free fridge
- Spacious pantry in kitchen
- Laminate countertops
- LED lighting throughout
- PVC cabinet doors throughout

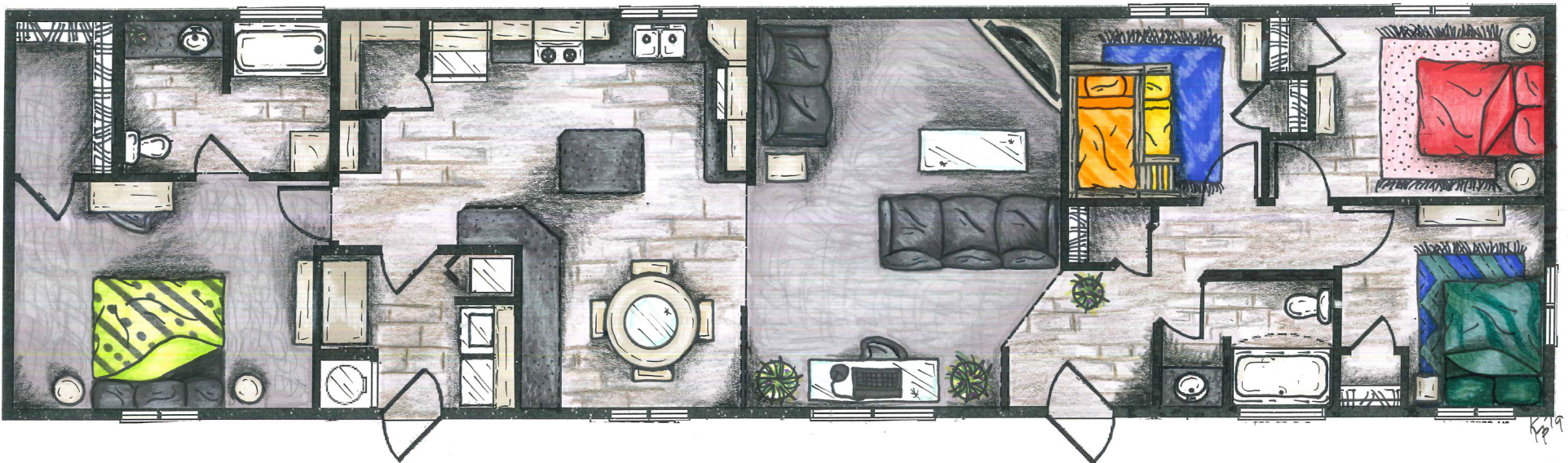
Shooting Star
Laminate Countertop

Teak Glow-Carpet

Stardust Pearl
Wall Panel

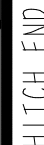
O919M Idaho-Lino

Velluto Daybreak-Cabinets

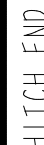


Plans in this brochure are not shown to scale

MRD2076-161-C



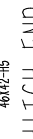
MRD2076-217-C



MRD2076-259-C

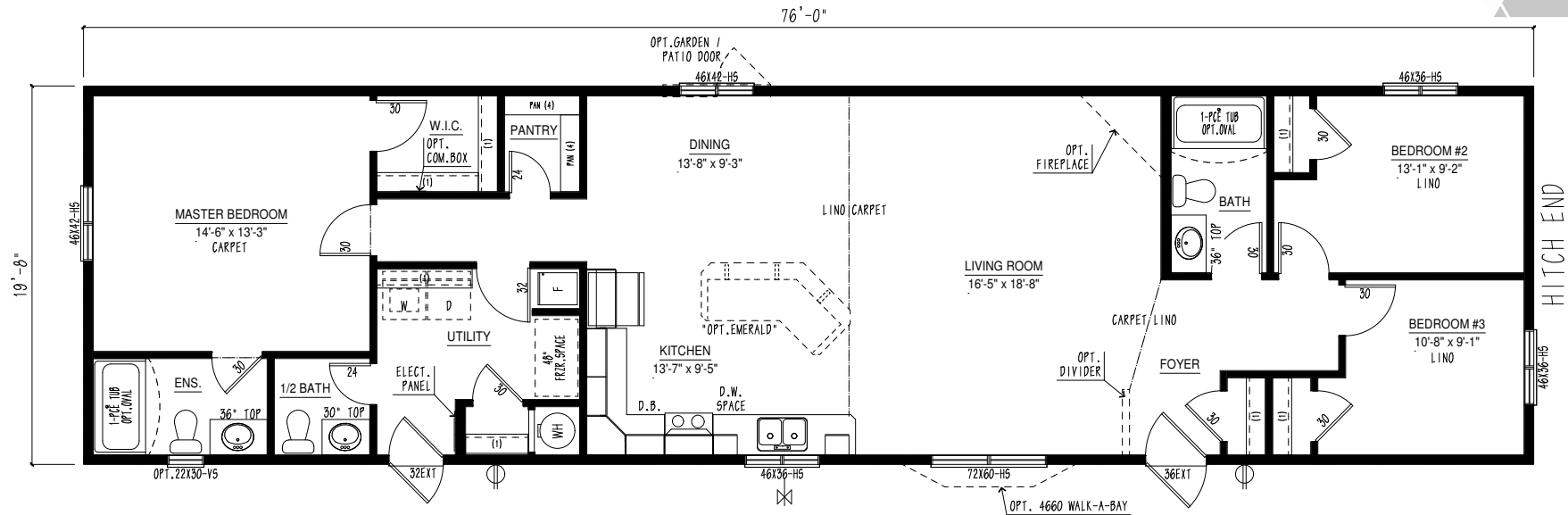


MRD2076-260-C



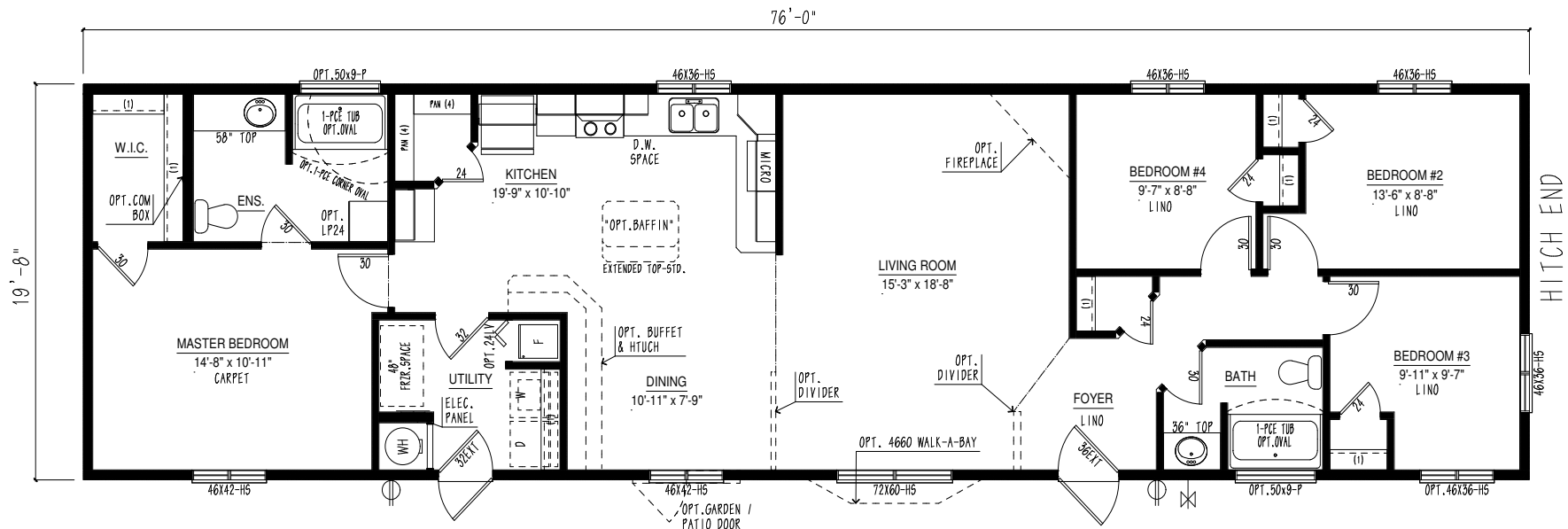
MRD2076-261-C

1520 sqft | 3 bed 2 bath



MRD2076-262-C

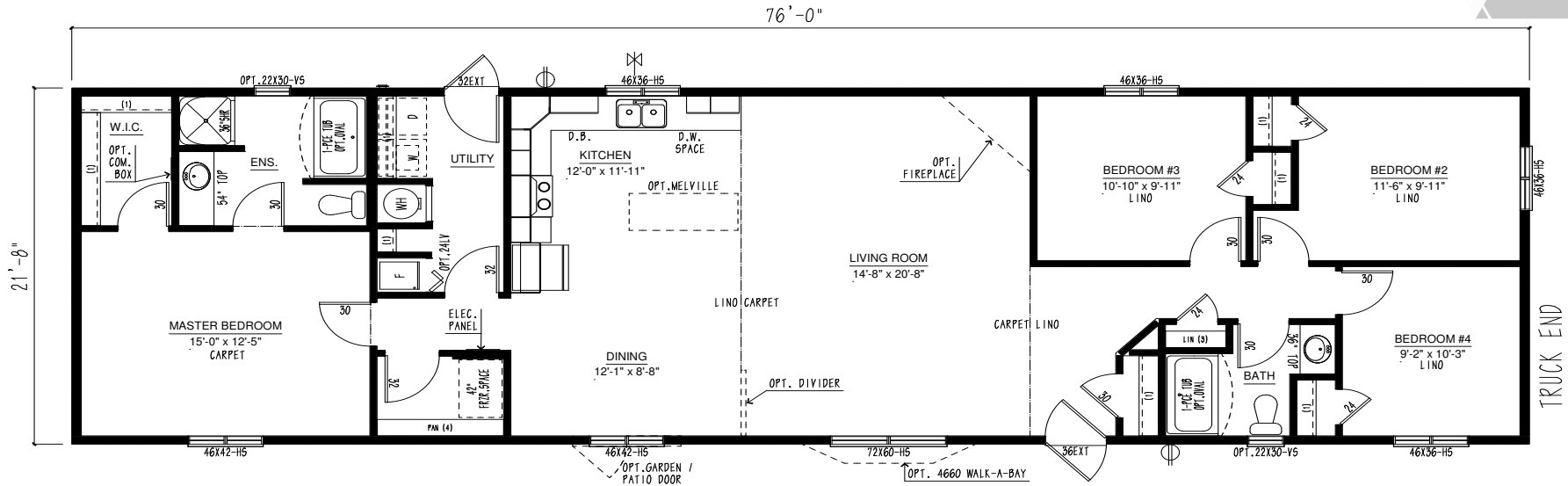
1520 sqft | 4 bed 2 bath



Plans are subject to change

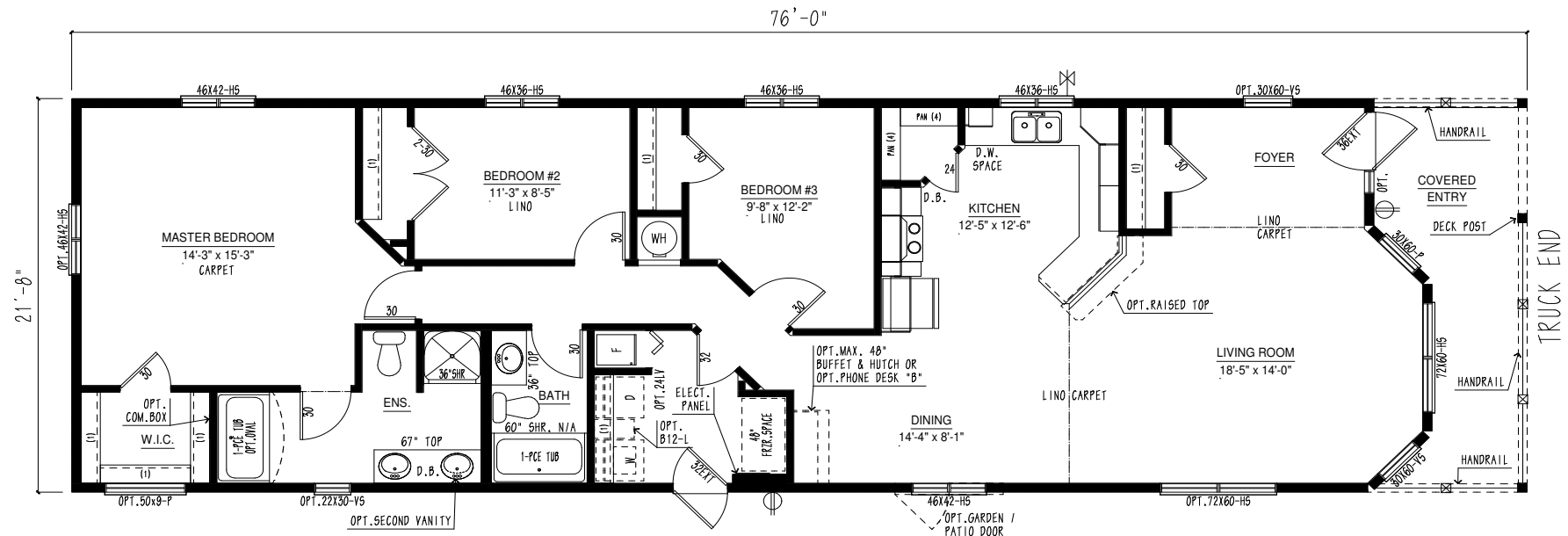
MRD2276-237-C

1672 sqft | 4 bed 2 bath



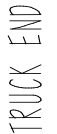
MRD2276-248-C

1672 sqft | 3 bed 2 bath



Plans are subject to change

50' - 0"



64'-0"



70'-0"



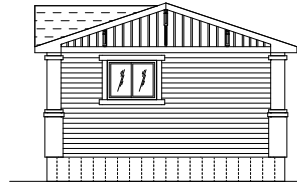
70'-0"



Aspen Creek Exterior Packages

Aspen "A" Includes:

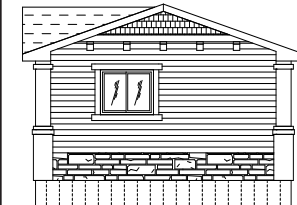
- M-Series Pillar Package 1-Corner & 3-Flats
- Dormer with cut-out eave over living room window
- Vertical PVC Board and Batten with 3-eave supports inside dormer & front gable
- Craftsmen Accents around standard windows front end & curbside



Aspen Creek "A" Front & Curbside Elevation

Aspen "B" Includes:

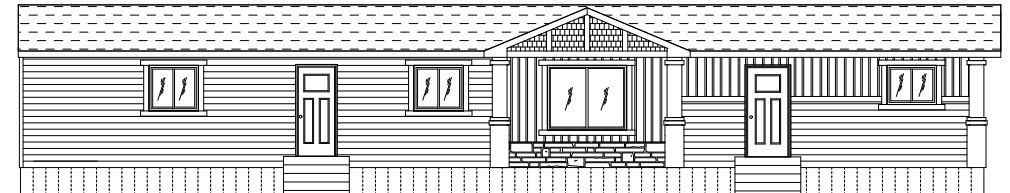
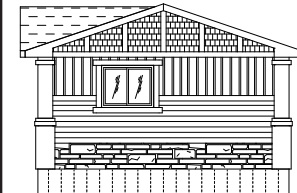
- M-Series Pillar Package 1-Corner & 3-Flats
- Dormer with cut-out eave over living room window
- Built out PVC shake accent with dentil supports in side dormer & front gable
- Craftsmen Accents around standard windows front end & curbside
- Ridgestone under living room window & front end between pillars



Aspen Creek "B" Front & Curbside Elevation

Aspen "C" Includes:

- M-Series Pillar Package 1-Corner & 3-Flats
- 4 1/2" extended dormer with cut-out eave over living room window
- PVC shakes with vertical accent boards in side dormer & front gable
- Craftsmen Accents around standard windows front end & curbside
- Ridgestone under living room window & front end between pillar
- Vertical PVC board and batten accent as shown



Aspen Creek "C" Front & Curbside Elevation

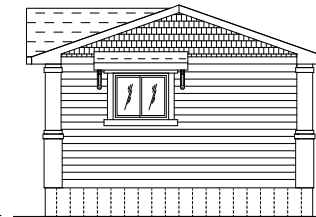
Aspen "D" Includes:

- M-Series Pillar Package 1-Corner & 3-Flats
- 4 1/2" extended dormer with cut-out eave over living room window & 9" extended dormer over front window
- Vertical PVC board and batten accent in side dormer & front gable
- Craftsmen Accents around standard windows front end & curbside
- Ridgestone between pillars as shown

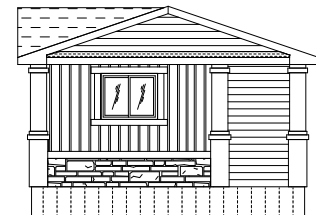


Aspen Creek "D" Front & Curbside Elevation

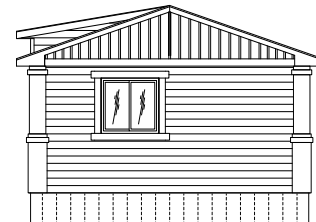
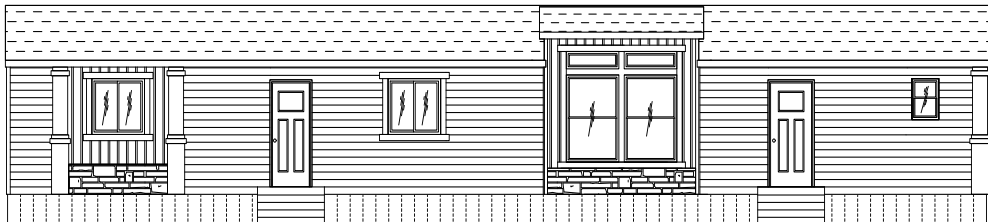
Aspen Creek Exterior Packages



Aspen Creek "F" Front & Curbside Elevation



Aspen Creek "G" Front & Curbside Elevation



Aspen Creek "H" Front & Curbside Elevation

Aspen "F" Includes:

- M-Series Pillar Package 1-Corner & 3-Flats
- 4 1/2" extended dormer with cut-out eave over living room window
- PVC shakes in side dormer & front gable
- Shingled roof with eave supports over living room & front windows
- Craftsmen accents around standard windows front end & curbside

Aspen "G" Includes:

- M-Series Pillar Package 1-Corner & 4-Flats
- Dormer with eave over living room window
- Shingled eave across front of unit
- Horizontal siding at side dormer & front end gable
- Vertical PVC board and batten around living room & front windows as shown
- Craftsmen accents around standard windows front end & curbside
- Ridgestone under living room & front windows between pillars

Aspen "H" Includes:

- M-Series Pillar Package 1-Corner & 3-Flats
- Tower dormer at living room with 4 1/2" side eaves C/W 2-46x68-VS and 2-46x12-P ILO standard windows
- Vertical PVC board and batten around living room, bedroom windows & in front gable
- Craftsmen accents around standard windows front end & curbside
- Ridgestone under living room & master bedroom windows as shown

Notes

Construction Standards

- 4/12 roof pitch
- Residential, maintenance free vinyl siding
- Lifetime Warranty* shingles w/full underlayment
- Tubular steel frame with hitch 16', 18', 20'
- Engineered wood web floor truss system 22' & 24'
- 16' wide-Floor joists: 2x10 @ 24" o/c
- 18', 20' wide-Floor joists: 2x10 @ 16" o/c
- Exterior wall sheathing (glued & fastened)
- Colored metal soffit and fascia
- Triple M rigid exterior wall system
- Frost free tap
- Dedicated receptacle for heat tape at kitchen sink
- 23/32" floor sheathing (glued & fastened)
- 8' walls, 2x6 exterior & 2x4 interior walls
- Exterior house wrap
- Insulation -
Ceiling: R-60 flat/R32 Cathedral
Floor: R-40
Walls: R-22
- 1/2" stippled gyproc ceiling
- Vaulted ceiling - living room, dining room and family room (plan specific)
- Carpet with upgrade underlay in living room, family room & master bedroom
- Foam-back linoleum (fully glued and rolled)
- Convertible gas furnace with electronic ignition and coil cavity underneath
- 40 US gallon electric HWT

- Plumbed for washer, wired for dryer
- 100 Amp electric service panel
- 36" front & 32" rear exterior doors w/ screen doors
- Arc fault breakers
- 1 1/2" conduit from draw side of panel through floor
- White Clermont interior doors
- 32" utility room door
- Standard Carriage lights at all exterior doors
- Exterior GFI Receptacle at all exterior doors
- Main water shut-off inside home at kitchen sink
- Braided water lines at sinks & toilets

Distinctive Standard Features

- Low E Argon windows & sills complete w/ screens
- 12" side eave with venting
- Craftsmen accent boards around windows (front & curbside)
- Decorative wall panels with tape seams
- Cordless cellular blinds throughout
- Décora switches
- River Dinette light in dining room
- LED lighting throughout
- Continuous rod shelving in closet

Modern Crafted Kitchen

- Adjustable track lighting (2)
- Modular cabinets w/ adjustable shelving

- Spacious pantry in kitchen (where applicable)
- PVC cabinet doors throughout
- Laminate countertops with self-edge
- Tight weave pantry shelving
- Single lever faucet with spray
- Black 30" deluxe range with power range hood
- Black 18 cubic ft. frost free fridge

Contemporary Baths

- 1-piece smooth back tub/shower combination in main bath & ensuite
- De-humidistat on main bath fan, all other fans on separate switch

Optional Features

- Upgrade interior doors
- White silk glass pantry door
- Garden doors
- 16" overhang at rear
- A/C ready
- Black windows
- New modern exterior packages
- Full tile backsplash with decor insert
- Optional stainless steel or slate appliances
- Cabinet crown molding
- 200 Amp electrical service
- Built-in dishwasher
- Nail holes in trim filled
- Pine interior trim
- 3" PVC cove mould at ceiling
- Upgrade lighting options



Triple M Housing

www.triplemhousing.com

3501 Giffen Road North
Lethbridge, AB
T1H 0E8